

Model Name: GA-H61M-DS2 DVI Revision 1.01

SHEET TITLE

01	COVER SHEET
02	BOM & PCB MODIFY HISTORY
03	BLOCK DIAGRAM
04	CPU_LGA1155-A
05	CPU_LGA1155-B
06	CPU_LGA1155-C
07	DDR III CHANNEL A
08	DDR III CHANNEL B
09	PCH_FDI,DMI,USB,PCIE,NVRAM
10	PCH_DP,CLK BUFFER
11	PCH_HOST,SATA,PCI
12	PCH_GPIO,CTRL,AUDIO
13	PCH_PWR,GND
14	PCI EXPRESS*16 SLOT
15	PCI EXPRESS*1x2 SLOT
16	ITE 8728 LPC IO
17	COMA,KB_MS,R_USB,-PROCHOT
18	HWM,FAN CTRL,OV
19	DUAL BIOS
20	FP,FUSB,SPK,SATALED
21	ALC887
22	REAR AUDIO JACK
23	REALTEK 8111E/USB_LAN
24	DISCRETE POWER
25	ATX,-S_WARN,-S_ACK,5VDUAL
26	Richtek_RT8120_CPU_VTT
27	VCORE INTERSIL_95836_1

SHEET TITLE

28	VCORE INTERSIL_95836_2
29	VCORE INTERSIL_95836_3
30	LPT

Gigabyte Technology		
Cover Sheet		
Title	Document Number	Rev
	GA-H61M-DS2 DVI	1.01
Date:	Tuesday, October 02, 2012	Sheet 1 of 31

Model Name: GA-H61M-DS2 DVI

Component value change history

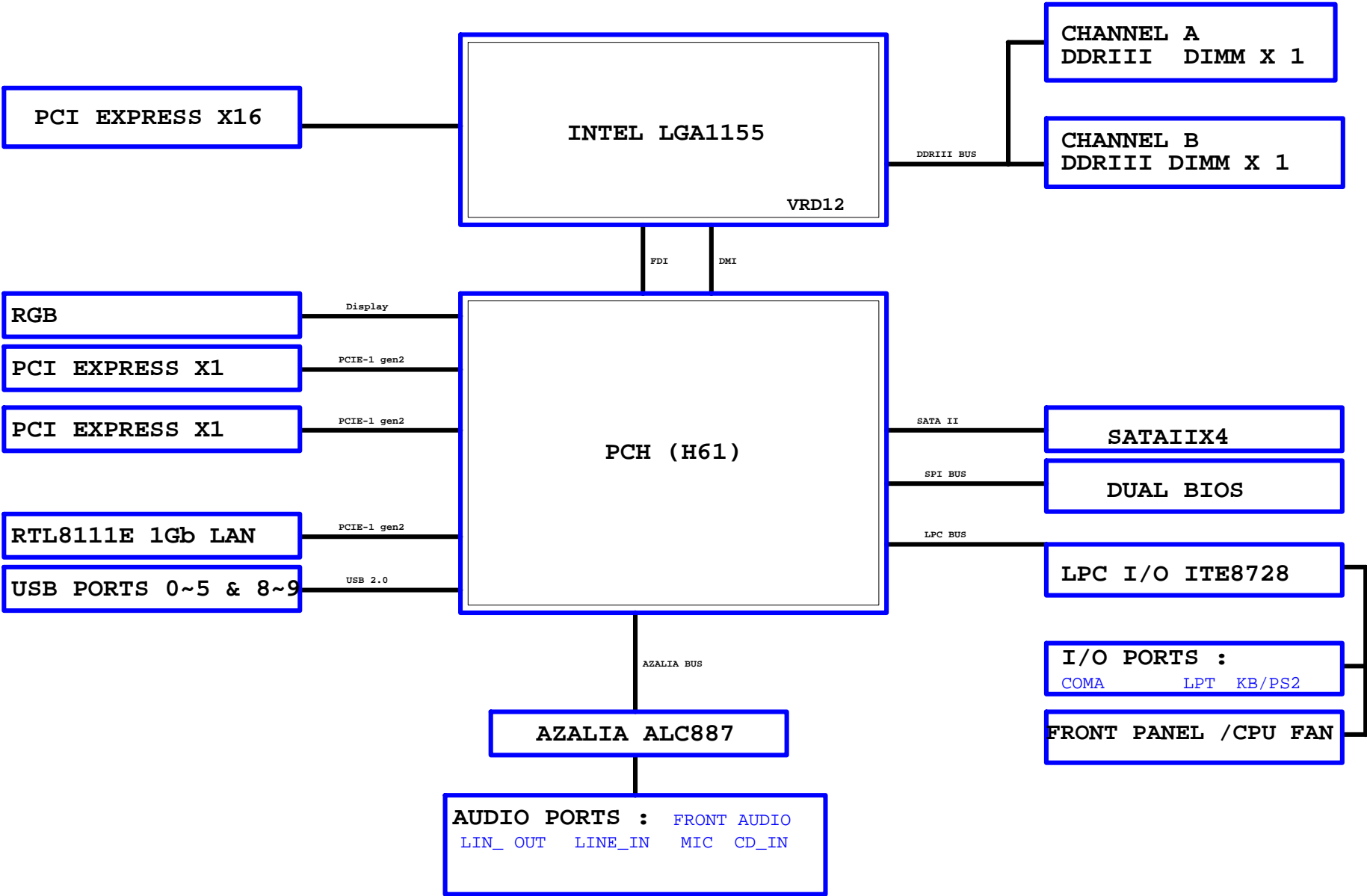
2012/09/17

[illegible]

Circuit or PCB layout change

[illegible]

BLOCK DIAGRAM





CPUA

MAAA0	AV27	SA_MA[0]	SA_DQS[0]	AK3	DQSA0
MAAA1	AY24	SA_MA[1]	SA_DQS[0]	AK2	-DQSA0
MAAA2	AW24	SA_MA[2]			
MAAA3	AW23	SA_MA[3]			
MAAA4	AV23	SA_MA[4]	SA_DQ[0]	AJ3	MDA0
MAAA5	AT24	SA_MA[5]	SA_DQ[1]	AJ4	MDA1
MAAA6	AT23	SA_MA[6]	SA_DQ[2]	AL3	MDA2
MAAA7	AV22	SA_MA[7]	SA_DQ[3]	AL4	MDA3
MAAA8	AT22	SA_MA[8]	SA_DQ[4]	AJ2	MDA4
MAAA9	AT21	SA_MA[9]	SA_DQ[5]	AJ1	MDA5
MAAA10	AV28	SA_MA[10]	SA_DQ[6]	AL2	MDA6
MAAA11	AU21	SA_MA[11]	SA_DQ[7]	AL1	MDA7
MAAA12	AT21	SA_MA[12]			
MAAA13	AW32	SA_MA[13]	SA_DQS[1]	AP3	DQSA1
MAAA14	AU20	SA_MA[14]	SA_DQS[1]	AP2	-DQSA1
MAAA15	AT20	SA_MA[15]			

7	-SWEA	AW29	SA_WE#	SA_DQ[8]	AN1	MDA8	8	-SWEB	AR25	SA_WE#	SA_DQ[8]	AM7	MDB8
7	-SCASA	AV30	SA_CAS#	SA_DQ[9]	AN4	MDA9	8	-SCASB	AK25	SA_CAS#	SA_DQ[9]	AM7	MDB9
7	-SRASA	AU28	SA_RAS#	SA_DQ[10]	AR3	MDA10	8	-SRASB	AP24	SA_RAS#	SA_DQ[10]	AM10	MDB10
7	SBA00	AY29	SA_BS[0]	SA_DQ[11]	AR4	MDA11	8	SBA00	AP23	SA_BS[0]	SA_DQ[11]	AL6	MDB11
7	SBA01	AW28	SA_BS[1]	SA_DQ[12]	AN2	MDA12	8	SBA01	AM24	SA_BS[1]	SA_DQ[12]	AM6	MDB12
7	SBA02	AV20	SA_BS[2]	SA_DQ[13]	AN3	MDA13	8	SBA02	AW17	SA_BS[2]	SA_DQ[13]	AL9	MDB14
7	-CSA0	AU29	SA_CS#	SA_DQ[14]	AR2	MDA14	8	-CSB0	AN25	SA_CS#	SA_DQ[14]	AM9	MDB15
7	-CSA1	AV32	SA_CS#	SA_DQ[15]	AR1	MDA15	8	-CSB1	AN26	SA_CS#	SA_DQ[15]	AR8	DQSB2
7	CKEA0	AV19	SA_CKE[0]	SA_DQ[16]	AW2	MDA16	8	CKEB0	AX26	SA_CKE[0]	SA_DQ[16]	AP8	-DQSB2
7	CKEA1	AT19	SA_CKE[1]	SA_DQ[17]	AW3	MDA17	8	CKEB1	AX26	SA_CKE[1]	SA_DQ[17]	AP7	MDB16
7		AU18	SA_CKE[2]	SA_DQ[18]	AV5	MDA18	8		AX26	SA_CKE[2]	SA_DQ[18]	AR7	MDB17
7		AV18	SA_CKE[3]	SA_DQ[19]	AW5	MDA19	8		AX26	SA_CKE[3]	SA_DQ[19]	AP10	MDB18
7	MODT_A0	AV31	SA_ODT[0]	SA_DQ[20]	AU2	MDA20	8	MODT_B0	AL26	SA_ODT[0]	SA_DQ[20]	AR10	MDB19
7	MODT_A1	AU32	SA_ODT[1]	SA_DQ[21]	AU3	MDA21	8	MODT_B1	AP26	SA_ODT[1]	SA_DQ[21]	AP6	MDB20
7		AU30	SA_ODT[2]	SA_DQ[22]	AU5	MDA22	8		AX26	SA_ODT[2]	SA_DQ[22]	AR6	MDB21
7		AW33	SA_ODT[3]	SA_DQ[23]	AY5	MDA23	8		AX26	SA_ODT[3]	SA_DQ[23]	AR9	MDB22

7	DCLKA0	AY25	SA_CK[0]	SA_DQ[24]	AV8	DQSA3	8	DCLKB0	AL21	SA_CK[0]	SA_DQ[24]	AN13	DQSB3
7	-DCLKA0	AW25	SA_CK[0]	SA_DQ[25]	AW8	-DQSA3	8	-DCLKB0	AL22	SA_CK[0]	SA_DQ[25]	AN12	-DQSB3
7	DCLKA1	AU24	SA_CK[1]	SA_DQ[26]	AY7	MDA24	8	DCLKB1	AL20	SA_CK[1]	SA_DQ[26]	AM12	MDB24
7	-DCLKA1	AW27	SA_CK[1]	SA_DQ[27]	AU7	MDA25	8	-DCLKB1	AK20	SA_CK[1]	SA_DQ[27]	AM13	MDB25
7		AY27	SA_CK[2]	SA_DQ[28]	AW7	MDA26	8		AK20	SA_CK[2]	SA_DQ[28]	AR13	MDB26
7		AU26	SA_CK[3]	SA_DQ[29]	AW7	MDA27	8		AK20	SA_CK[3]	SA_DQ[29]	AP13	MDB27
7		AW26	SA_CK[3]	SA_DQ[30]	AW9	MDA28	8		AK20	SA_CK[3]	SA_DQ[30]	AL12	MDB28
7		AW26	SA_CK[3]	SA_DQ[31]	AY9	MDA29	8		AK20	SA_CK[3]	SA_DQ[31]	AL13	MDB29
7		AW26	SA_CK[3]	SA_DQ[32]	AW9	MDA30	8		AK20	SA_CK[3]	SA_DQ[32]	AR12	MDB30
7		AW26	SA_CK[3]	SA_DQ[33]	AY9	MDA31	8		AK20	SA_CK[3]	SA_DQ[33]	AP12	MDB31

7,8 -DDR3_RST

SM_DRAMRST#

C97

0.1u/4/X7R/16V/K/X

R240

0/4/SHT/M/X

AV13

SA_DQS[8]

AV12

SA_DQS[8]

AU12

SA_ECC_CB[0]

AU14

SA_ECC_CB[1]

AW13

SA_ECC_CB[2]

AY13

SA_ECC_CB[3]

AU13

SA_ECC_CB[4]

AU11

SA_ECC_CB[5]

AY12

SA_ECC_CB[6]

AW12

SA_ECC_CB[7]

AR40

MDA40

AR37

MDA41

SA_DQ[40]

AN38

MDA42

SA_DQ[41]

AN37

MDA43

SA_DQ[42]

AR39

MDA44

SA_DQ[43]

AR38

MDA45

SA_DQ[44]

AN39

MDA46

SA_DQ[45]

AN40

MDA47

SA_DQ[46]

AK38

DQSA6

SA_DQ[47]

AK39

-DQSA6

SA_DQS[6]

AL40

MDA48

SA_DQ[48]

AL37

MDA49

SA_DQ[49]

AJ38

MDA50

SA_DQ[50]

AJ37

MDA51

SA_DQ[51]

AL39

MDA52

SA_DQ[52]

AL38

MDA53

SA_DQ[53]

AJ39

MDA54

SA_DQ[54]

AJ40

MDA55

SA_DQ[55]

AF38

DQSA7

SA_DQS[7]

AF39

-DQSA7

SA_DQS[7]

AG40

MDA56

SA_DQ[56]

AG37

MDA57

SA_DQ[57]

AE38

MDA58

SA_DQ[58]

AE37

MDA59

SA_DQ[59]

AG39

MDA60

SA_DQ[60]

AG38

MDA61

SA_DQ[61]

AE39

MDA62

SA_DQ[62]

AE40

MDA63

SA_DQ[63]

DDR_0

1 OF 10

LGA1155[10SC1-F01155-01R_10SC1-F01155-02R]

CPUB

MAAB0	AK24	SB_MA[0]	SB_DQS[0]	AH7	DQSB0
MAAB1	AM20	SB_MA[1]	SB_DQS[0]	AH6	-DQSB0
MAAB2	AM19	SB_MA[2]			
MAAB3	AK18	SB_MA[3]			
MAAB4	AP19	SB_MA[4]	SB_DQ[0]	AG7	MDB0
MAAB5	AP18	SB_MA[5]	SB_DQ[1]	AG8	MDB1
MAAB6	AM18	SB_MA[6]	SB_DQ[2]	AJ9	MDB2
MAAB7	AL18	SB_MA[7]	SB_DQ[3]	AJ8	MDB3
MAAB8	AN18	SB_MA[8]	SB_DQ[4]	AG5	MDB4
MAAB9	AY17	SB_MA[9]	SB_DQ[5]	AG6	MDB5
MAAB10	AN23	SB_MA[10]	SB_DQ[6]	AJ6	MDB6
MAAB11	AU17	SB_MA[11]	SB_DQ[7]	AJ7	MDB7
MAAB12	AT18	SB_MA[12]			
MAAB13	AR26	SB_MA[13]	SB_DQS[1]	AM8	DQSB1
MAAB14	AY16	SB_MA[14]	SB_DQS[1]	AL8	-DQSB1
MAAB15	AV16	SB_MA[15]			

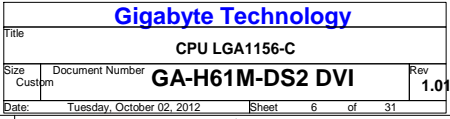
8	-SWEB	AR25	SB_WE#	SB_DQ[8]	AL7	MDB8
8	-SCASB	AK25	SB_CAS#	SB_DQ[9]	AM7	MDB9
8	-SRASB	AP24	SB_RAS#	SB_DQ[10]	AM10	MDB10
8	SBA00	AP23	SB_BS[0]	SB_DQ[11]	AL0	MDB11
8	SBA01	AM24	SB_BS[1]	SB_DQ[12]	AL6	MDB12
8	SBA02	AW17	SB_BS[2]	SB_DQ[13]	AL9	MDB14
8	-CSB0	AN25	SB_CS#	SB_DQ[14]	AM9	MDB15
8	-CSB1	AN26	SB_CS#	SB_DQ[15]	AR8	DQSB2
8	CKEB0	AU16	SB_CKE[0]	SB_DQ[16]	AP8	-DQSB2
8	CKEB1	AY15	SB_CKE[1]	SB_DQ[17]	AP7	MDB16
8		AW15	SB_CKE[2]	SB_DQ[18]	AR7	MDB17
8		AV15	SB_CKE[3]	SB_DQ[19]	AP10	MDB18
8	MODT_B0	AL26	SB_ODT[0]	SB_DQ[20]	AR10	MDB19
8	MODT_B1	AP26	SB_ODT[1]	SB_DQ[21]	AP6	MDB20
8		AX26	SB_ODT[2]	SB_DQ[22]	AR6	MDB21
8		AX26	SB_ODT[3]	SB_DQ[23]	AR9	MDB22
8		AX26	SB_DQS[3]	SB_DQS[3]	AN13	DQSB3
8		AX26	SB_DQS[3]	SB_DQS[3]	AN12	-DQSB3

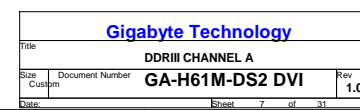
8	DCLKB0	AL21	SB_CK[0]	SB_DQ[24]	AM12	MDB24
8	-DCLKB0	AL22	SB_CK[0]	SB_DQ[25]	AM13	MDB25
8	DCLKB1	AL20	SB_CK[1]	SB_DQ[26]	AR13	MDB26
8	-DCLKB1	AK20	SB_CK[1]	SB_DQ[27]	AP13	MDB27
8		AK20	SB_CK[2]	SB_DQ[28]	AL12	MDB28
8		AK20	SB_CK[3]	SB_DQ[29]	AL13	MDB29
8		AK20	SB_CK[3]	SB_DQ[30]	AR12	MDB30
8		AK20	SB_CK[3]	SB_DQ[31]	AP12	MDB31
8		AK20	SB_DQS[4]	SB_DQS[4]	AN29	DQSB4
8		AK20	SB_DQS[4]	SB_DQS[4]	AN28	-DQSB4

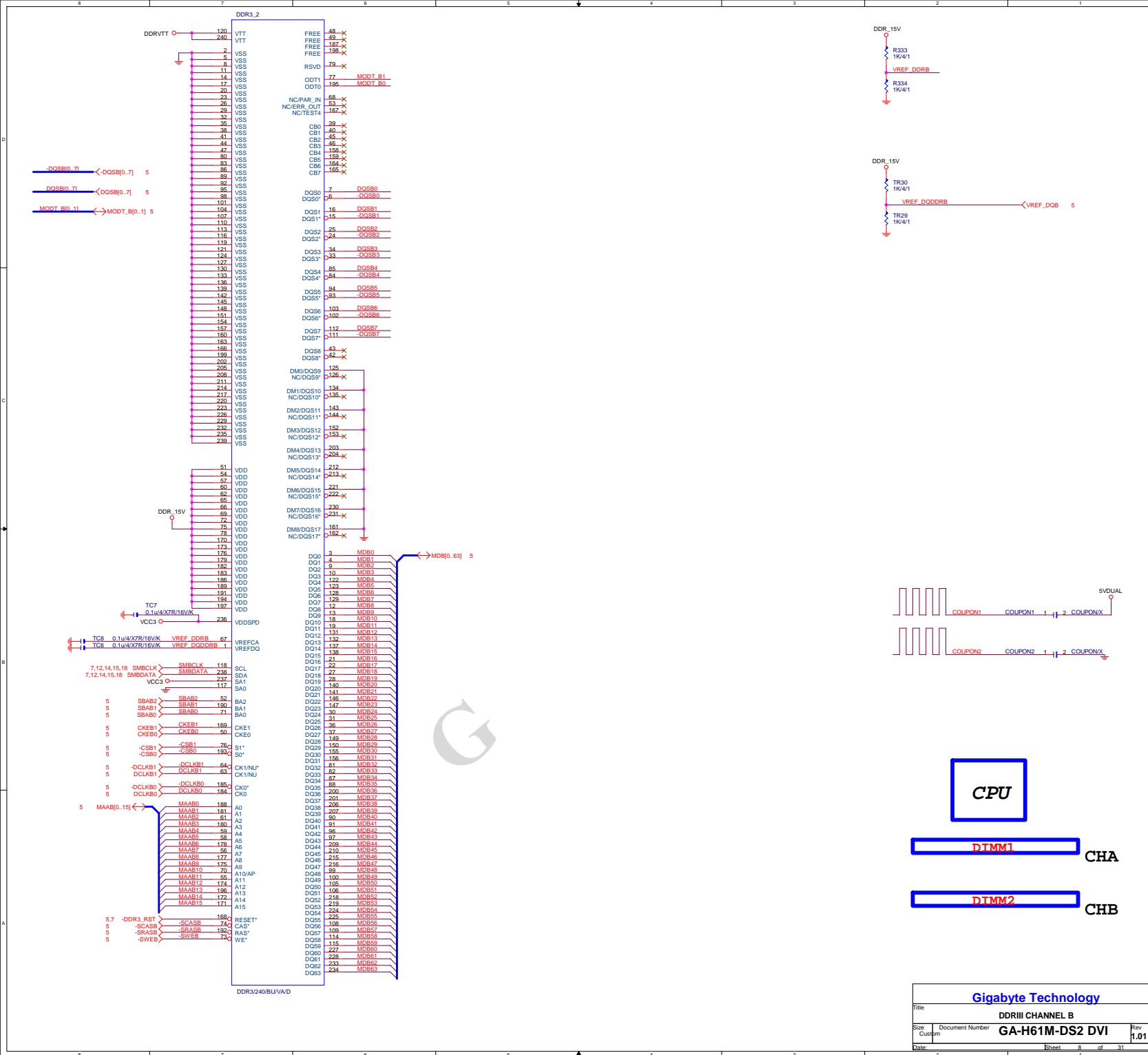
8	VREF_DQB	AH1	FC_AH1	SB_DQ[32]	AR28	MDB32
7	VREF_DOA	AH4	FC_AH4	SB_DQ[33]	AR29	MDB33
7				SB_DQ[34]	AL28	MDB34
7				SB_DQ[35]	AL29	MDB35
7				SB_DQ[36]	AP28	MDB36
7				SB_DQ[37]	AP29	MDB37
7				SB_DQ[38]	AM28	MDB38
7				SB_DQ[39]	AM29	MDB39
7				SB_DQS[5]	AP33	DQSB5
7				SB_DQS[5]	AR33	-DQSB5

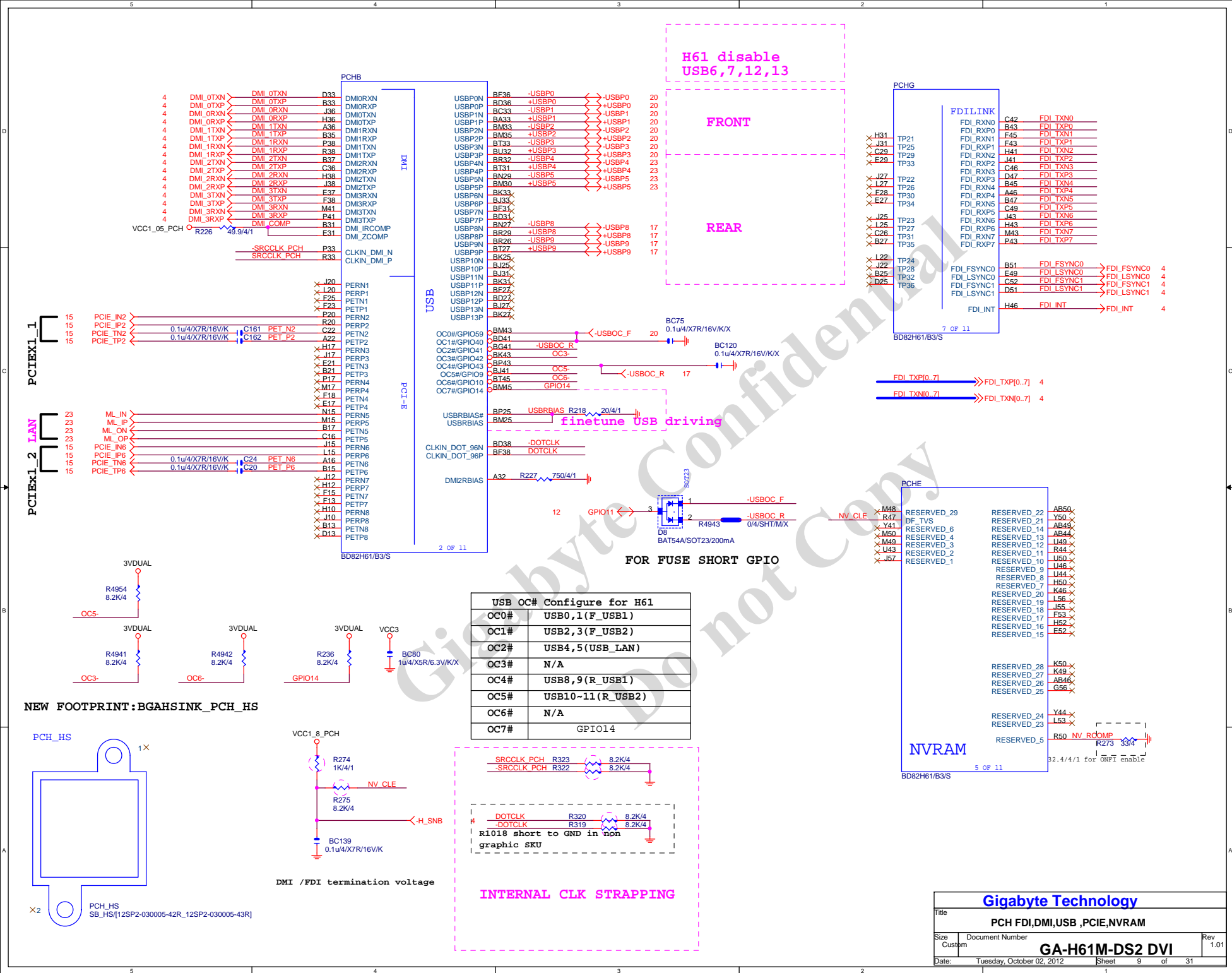
7	AN16	SA_DQS[8]	SB_DQS[8]	SB_DQ[40]	AP32	MDB40
7	AN15	SA_DQS[8]	SB_DQS[8]	SB_DQ[41]	AP31	MDB41
7	AL16	SA_ECC_CB[0]	SB_ECC_CB[0]	SB_DQ[42]	AP35	MDB42
7	AP16	SA_ECC_CB[1]	SB_ECC_CB[1]	SB_DQ[43]	AP34	MDB43
7	AL15	SA_ECC_CB[2]	SB_ECC_CB[2]	SB_DQ[44]	AR32	MDB44
7	AP15	SA_ECC_CB[3]	SB_ECC_CB[3]	SB_DQ[45]	AR31	MDB45
7		SA_ECC_CB[4]	SB_ECC_CB[4]	SB_DQ[46]	AR35	MDB46
7		SA_ECC_CB[5]	SB_ECC_CB[5]	SB_DQ[47]	AR34	MDB47
7		SA_ECC_CB[6]	SB_ECC_CB[6]	SB_DQS[6]	AL33	DQSB6
7		SA_ECC_CB[7]	SB_ECC_CB[7]	SB_DQS[6]	AM33	-DQSB6

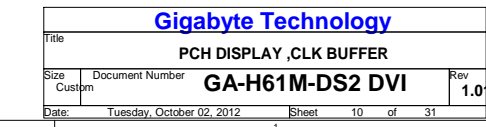
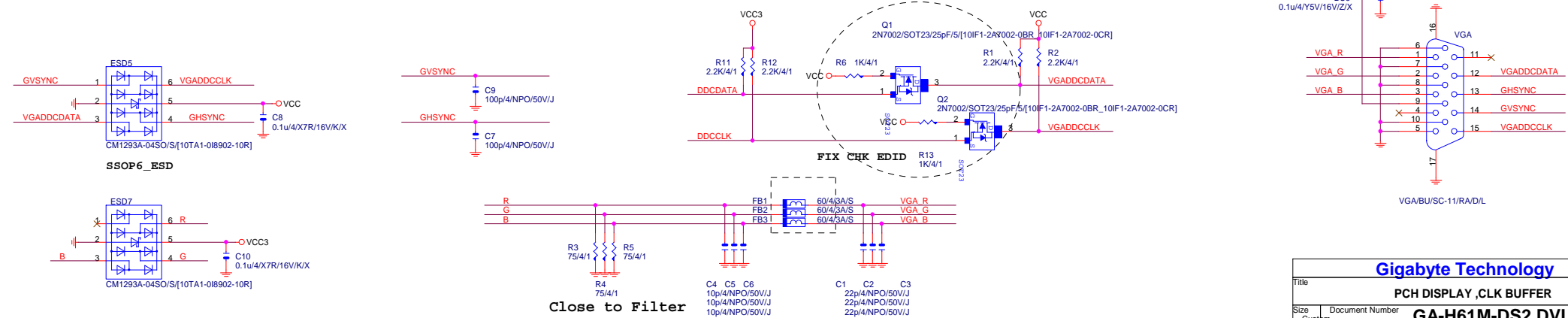
7	MODT_A[0..1]	MODT_A10_11
8	MODT_B[0..1]	MODT_B10_11
7	MDA[0..63]	MDA10_631
8	MDB[0..63]	MDB10_631
7	DQSA[0..7]	DQSA10_71
7	-DQSA[0..7]	-DQSA10_71
7	DQSB[0..7]	DQSB10_71

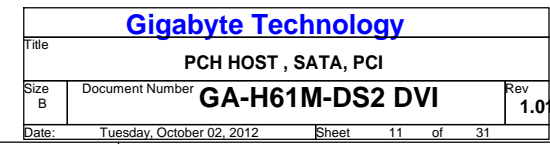




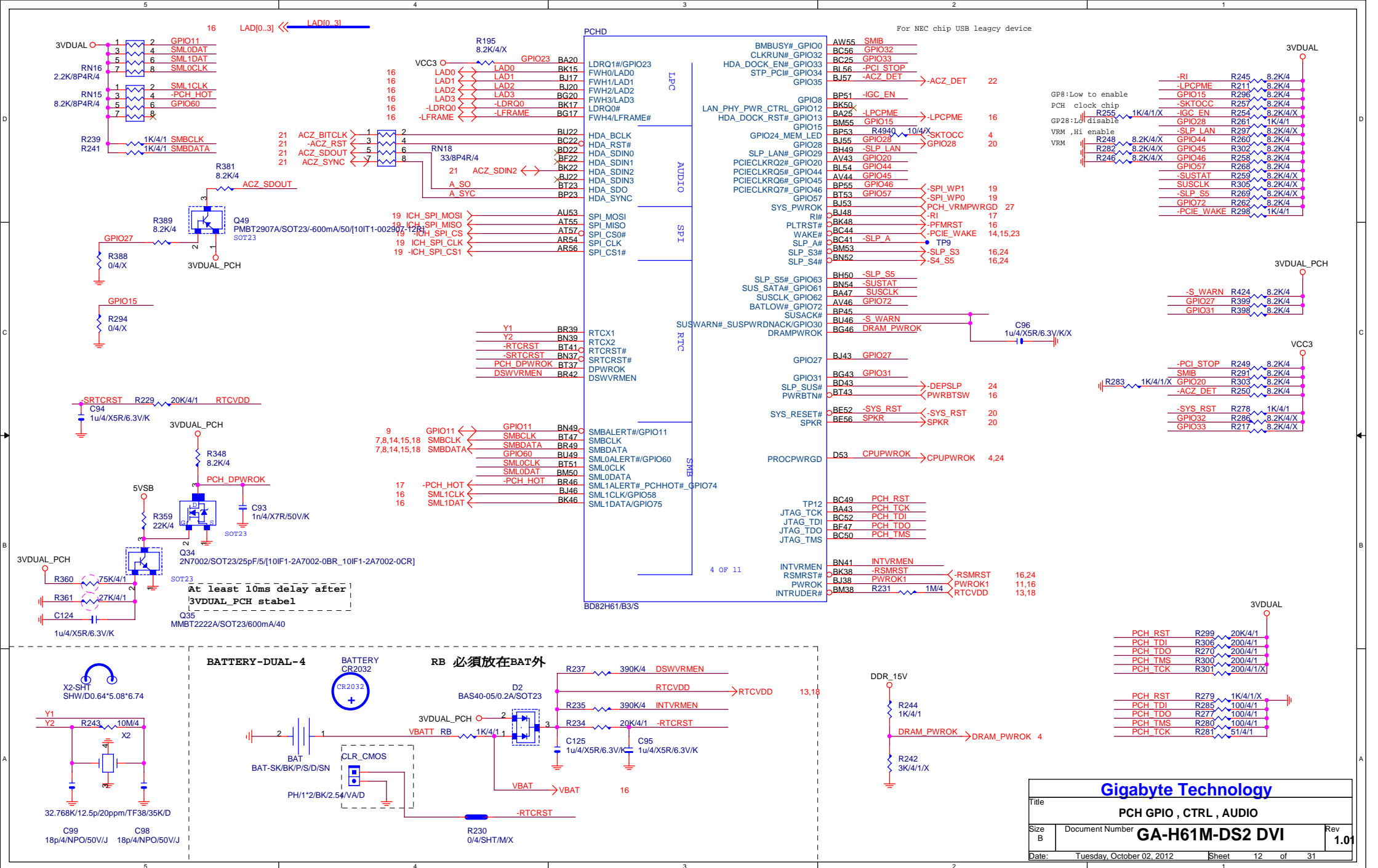


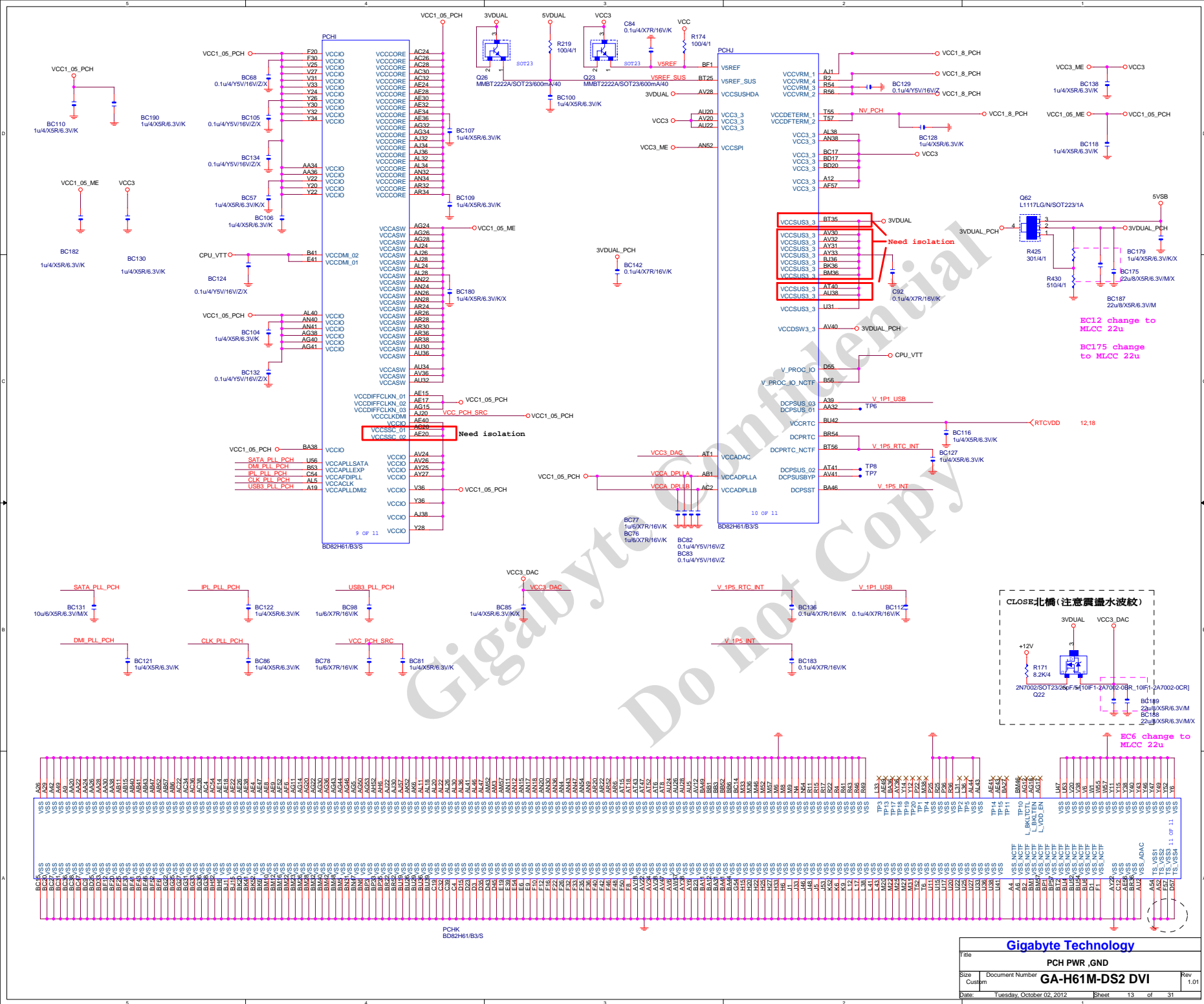


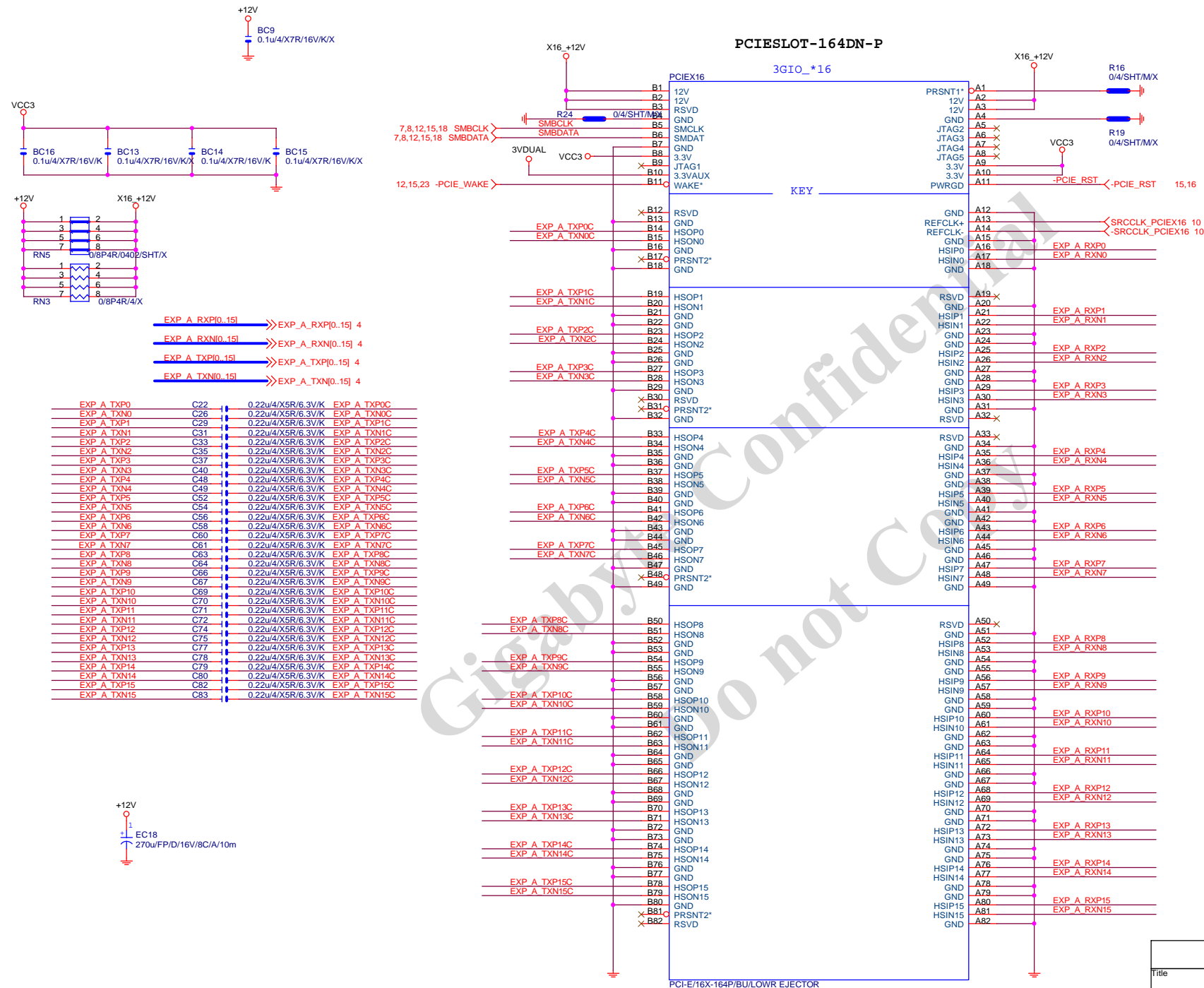




H1X7-SATA2-HS-MASK



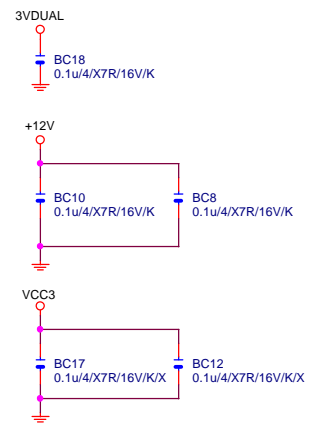
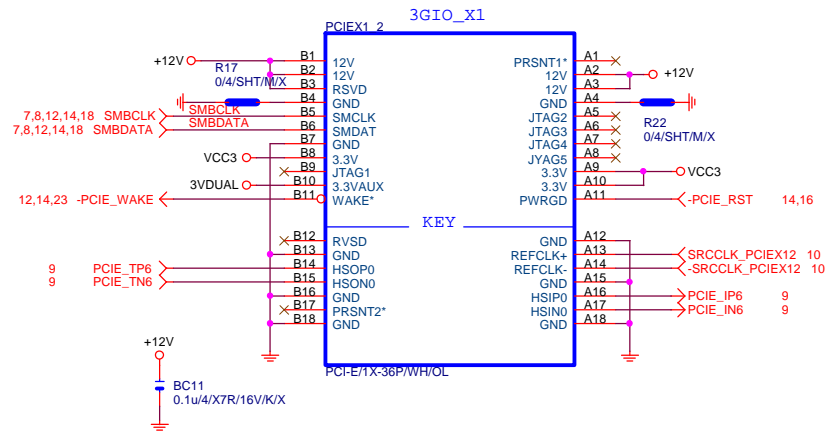




Gigabyte Technology

Title			
PCI EXPRESS * 16			
Size	Document Number	Rev	
Custom	GA-H61M-DS2 DVI	1.01	
Date:	Tuesday, October 02, 2012	Sheet	14 of 31

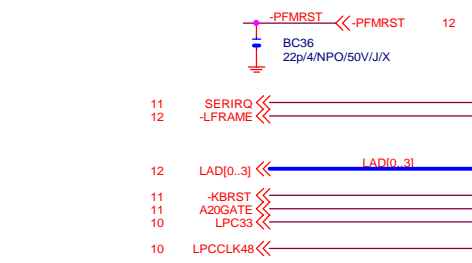
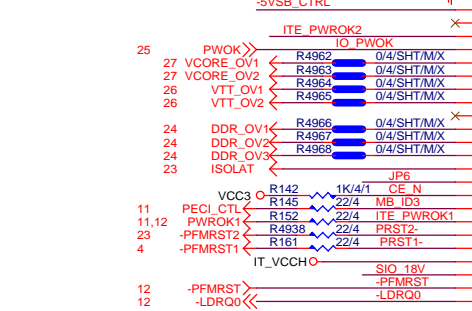
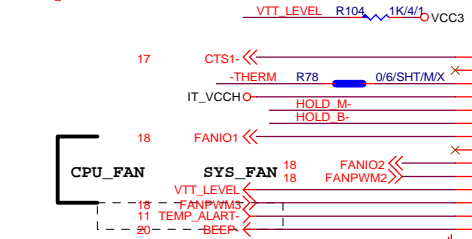
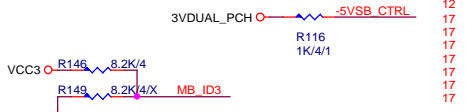
CLK GEN



<h1 style="text-align: center;">Gigabyte Technology</h1>			
<h2 style="text-align: center;">PCIEX1,X2/CLK GEN</h2>			
Size Custom	Document Number	<h1 style="text-align: center;">GA-H61M-DS2 DVI</h1>	Rev 1.01
Date:	Tuesday, October 02, 2012	Sheet 15	of 31

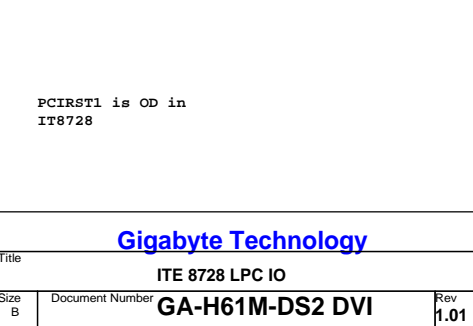
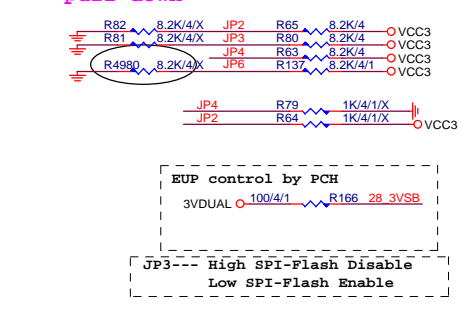
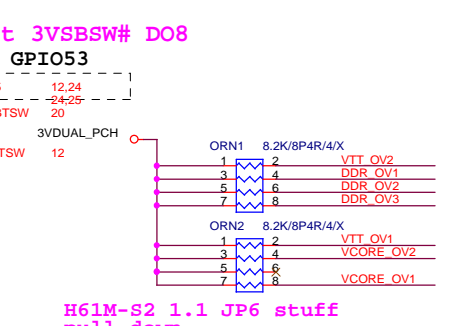
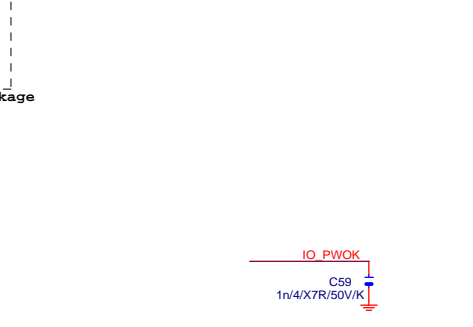
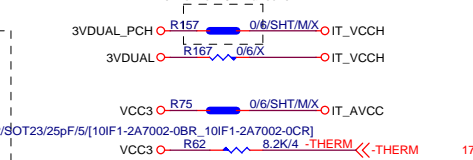
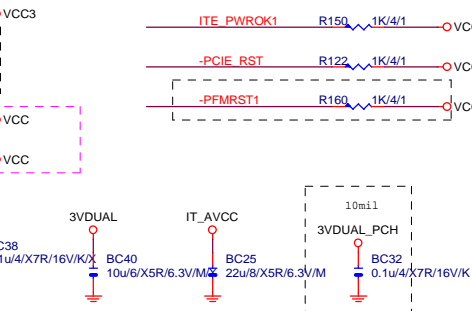
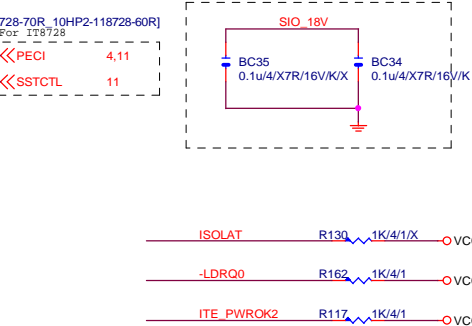
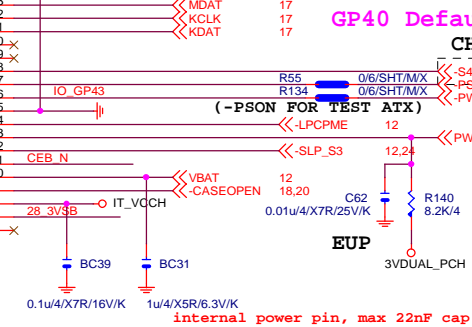
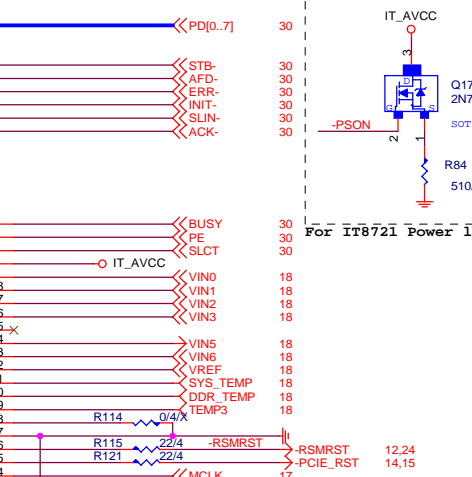
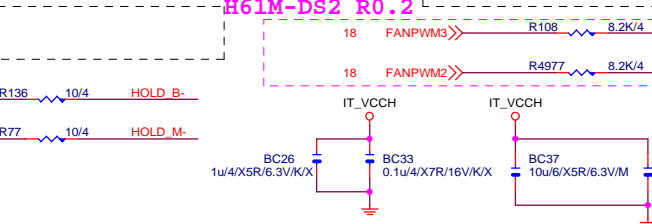
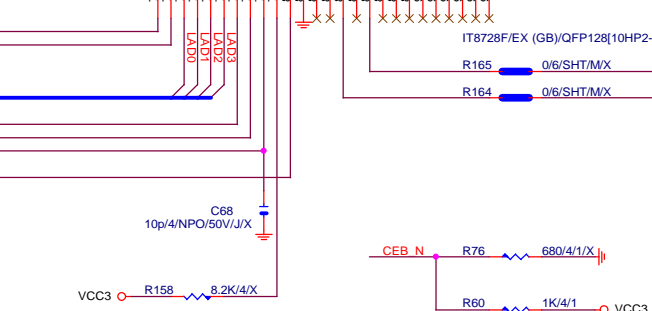
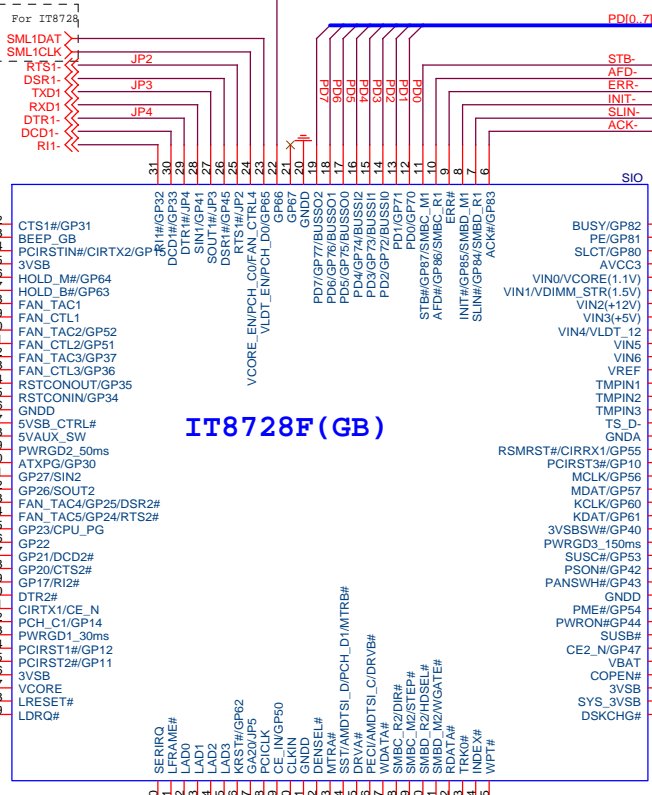
GP22 Default GP22 DIOD8

GP23 Default CPU_PG DOD8

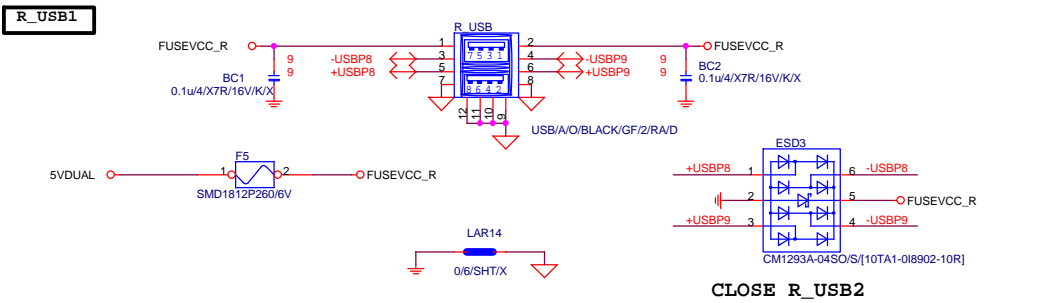
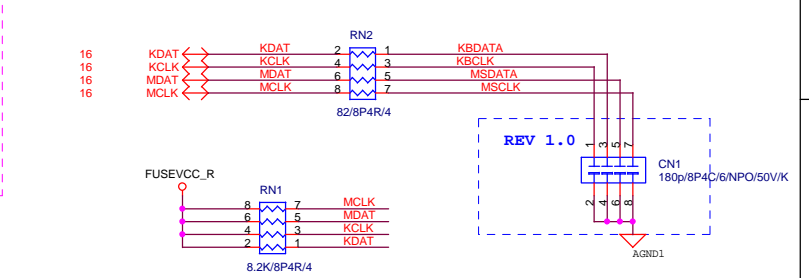
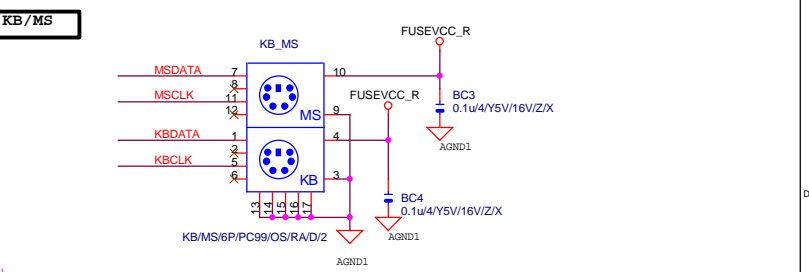
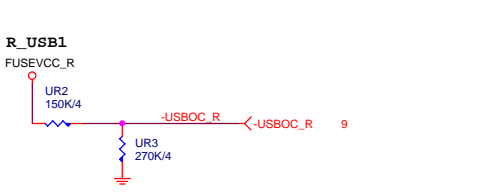
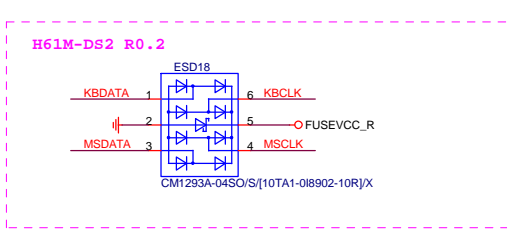
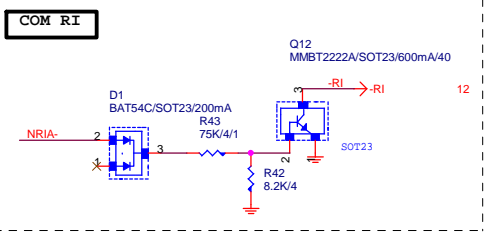
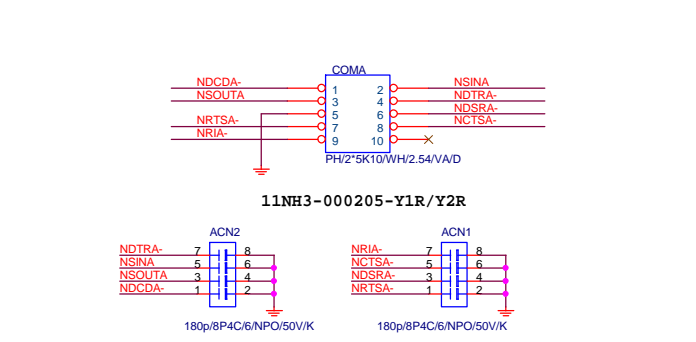
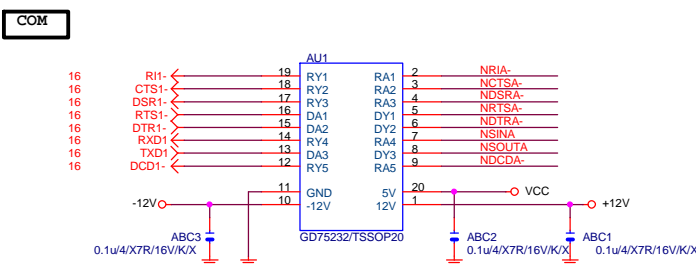


IT8728	
PIN121	VCORE_EN/PCH_C0
PIN120	VLDT_EN/PCH_D0
PIN19	ATXPG
PIN31	PCH_C1
PIN53	SST/AMDSI_D/MTRB#/PCH_D1
PIN55	PECI/AMDSI_C/DRV#
PIN66	SYS_3VSB
PIN70	GP47
PIN95	VIN2 (VCC5)
PIN96	VIN1 (VCC12)
PIN97	VIN1/VDIMM_STR (1.5V)
PIN98	VIN0/VCORE (1.1V)/NC

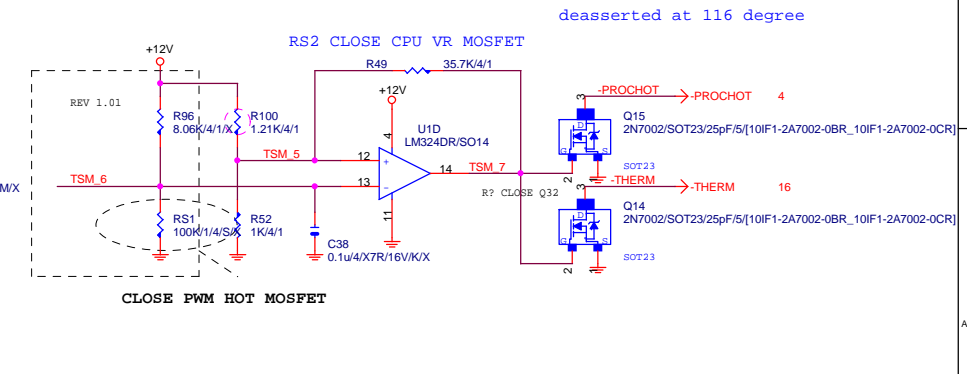
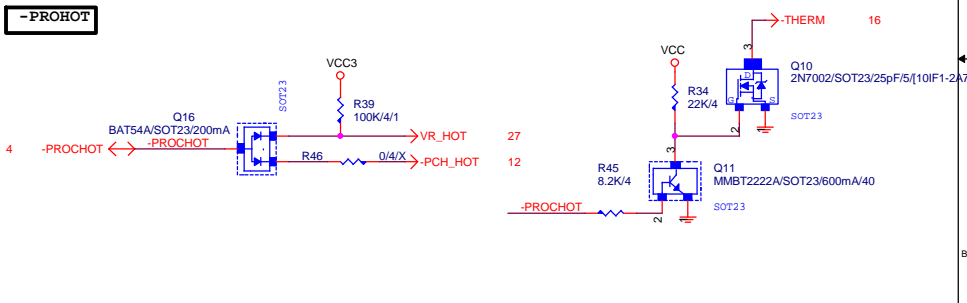
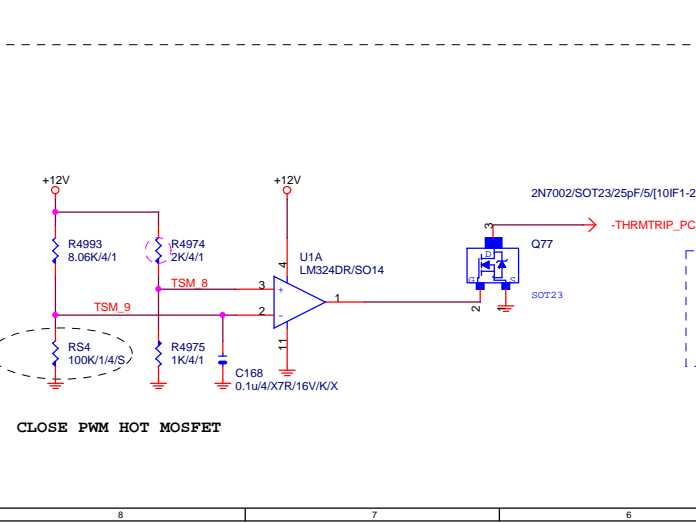
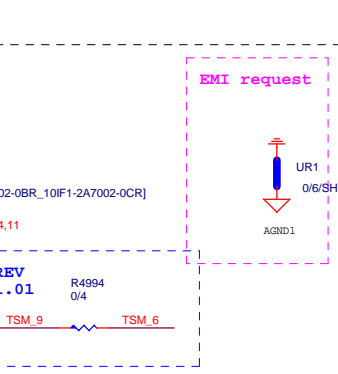
IT8728F (GB)



Gigabyte Technology			
Title			
ITE 8728 LPC IO			
Size B			
Document Number			
GA-H61M-DS2 DVI			
Date: Tuesday, October 02, 2012			
Sheet 16 of 31			
Rev 1.01			

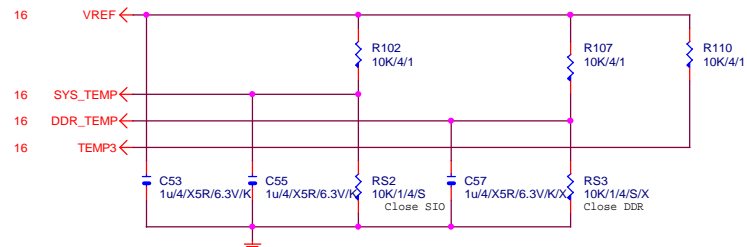


CLOSE R_USB2

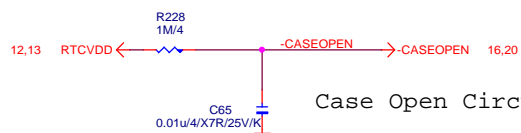


Gigabyte Technology			
Title			
COM,-RI,KB_USB,USB_ESATA,-PROCHOT			
Size	Document Number	Rev	
Custom	GA-H61M-DS2 DVI	1.01	
Date:	Tuesday, October 02, 2012	Sheet	17 of 31

TEMP H/W MONITOR



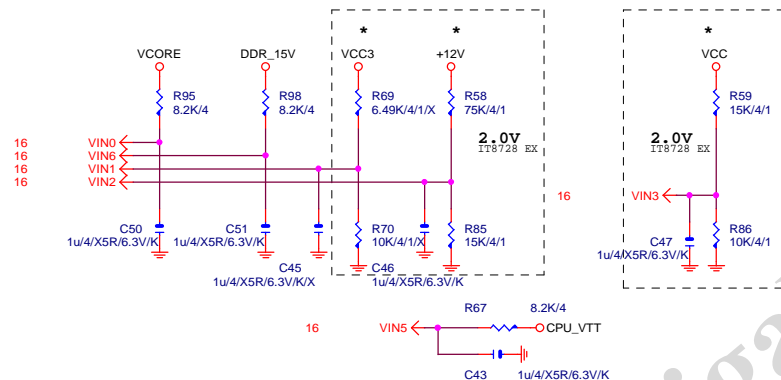
CASE OPEN



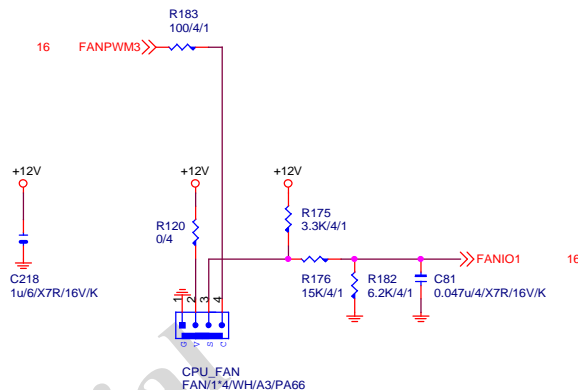
Case Open Circuits

VOLTAGE-- H/W MONITOR

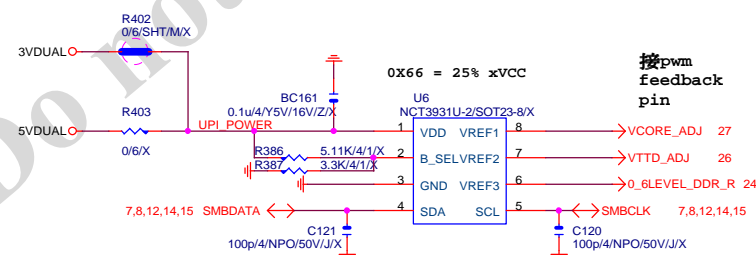
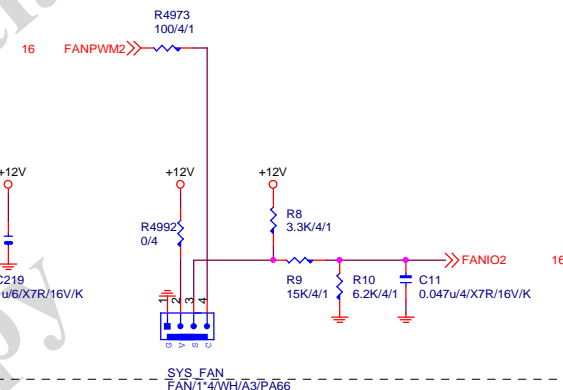
I (VAXG)



CPU SMART FAN



SYS SMART FAN

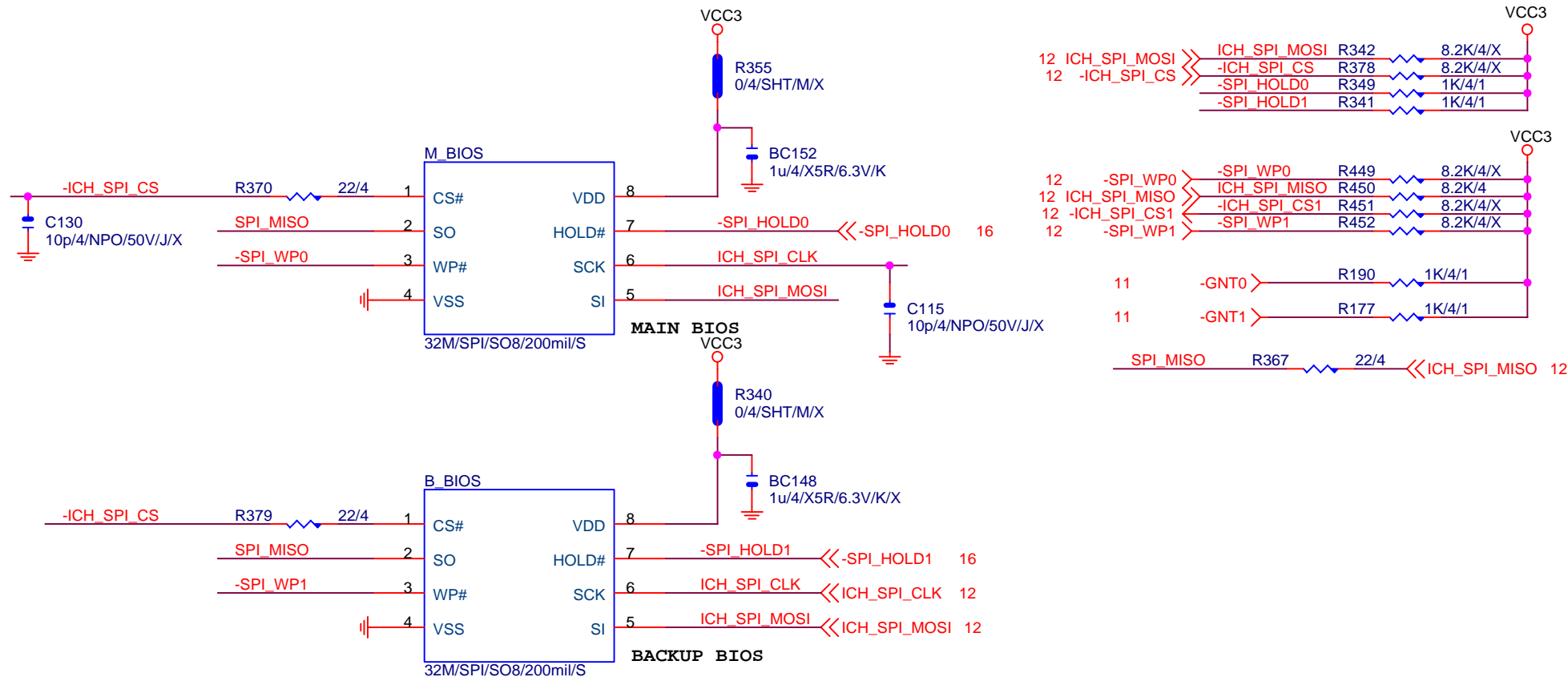


接pwm feedback pin

Gigabyte Technology

Title			HWM,FAN CTRL,OV	
Size	Document Number	GA-H61M-DS2 DVI		Rev
Custom				1.01
Date:	Tuesday, October 02, 2012	Sheet	18 of 31	

DUAL BIOS



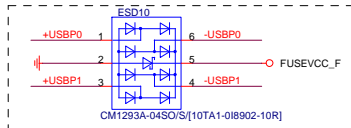
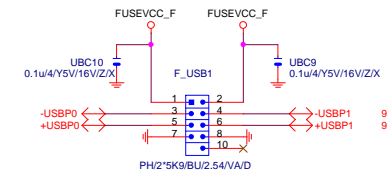
BOOT DEVICE	GNT1	GNT0
LPC	0	0
PCI	0	1
SPI	1	1

1 means floating
0 means PD 1K

Gigabyte Technology

Title		
DUAL BIOS		
Size A	Document Number	Rev
	GA-H61M-DS2 DVI	1.01
Date:	Tuesday, October 02, 2012	Sheet 19 of 31

FRONT USB1

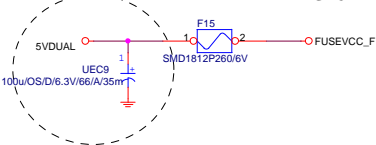


Close to connector

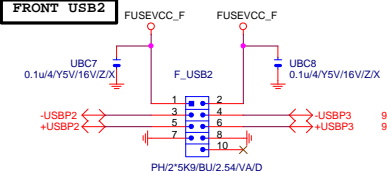
SATA LED



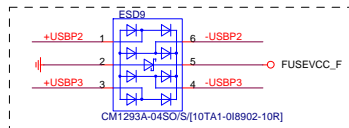
CLOSE F_USB1



FRONT USB2



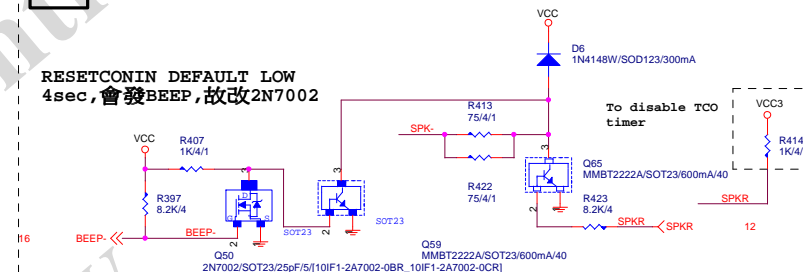
FRONT USB3



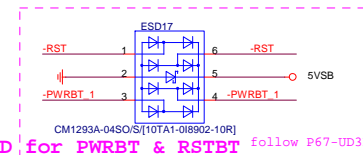
Close to connector

SPKR

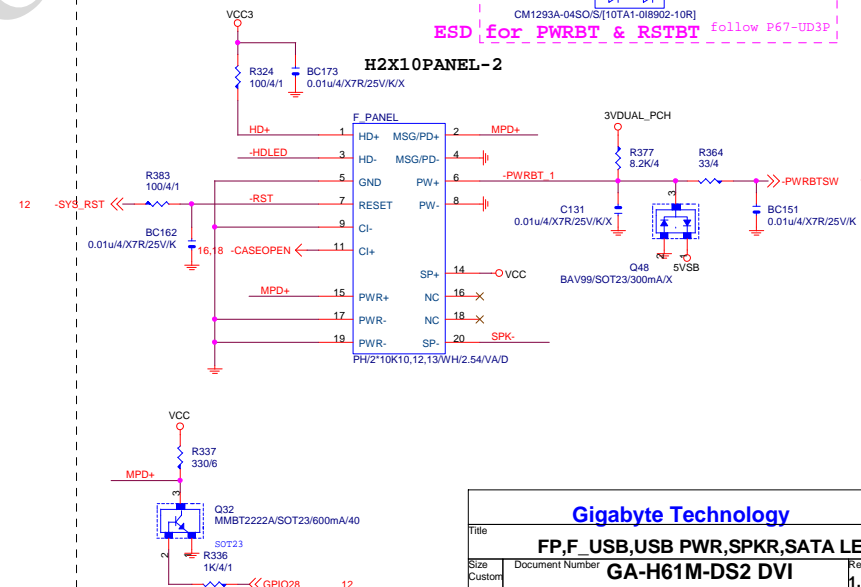
RESETCONIN DEFAULT LOW
4sec, 會發BEEP, 故改2N7002



INTEL FRONT PANEL

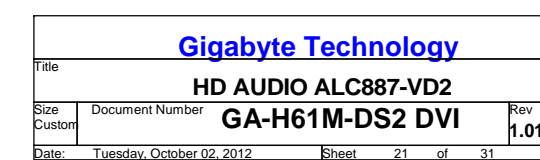


H2X10PANEL-2

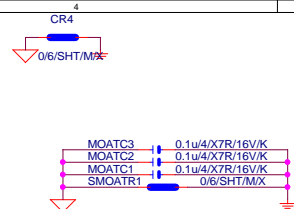
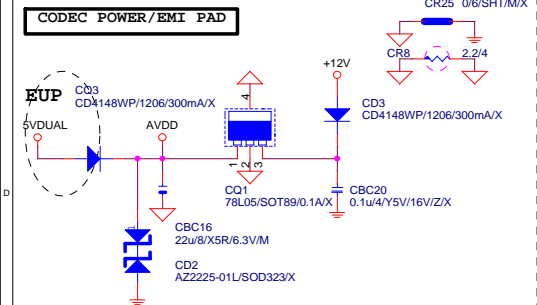


Gigabyte Technology

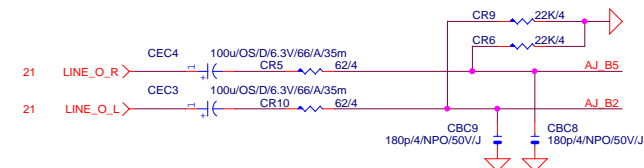
Title	FP,F_USB,USB PWR,SPKR,SATA LED		
Size	Document Number	GA-H61M-DS2 DVI	
Custom		Rev	1.01
Date:	Tuesday, October 02, 2012	Sheet	20 of 31

[illegible]

CODEC POWER/EMI PAD

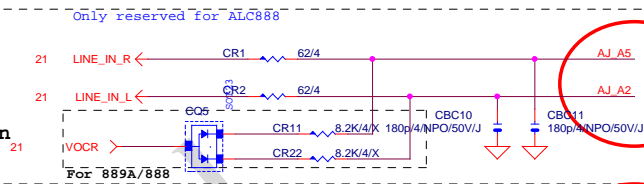
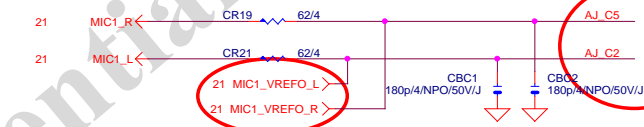


LINE-OUT

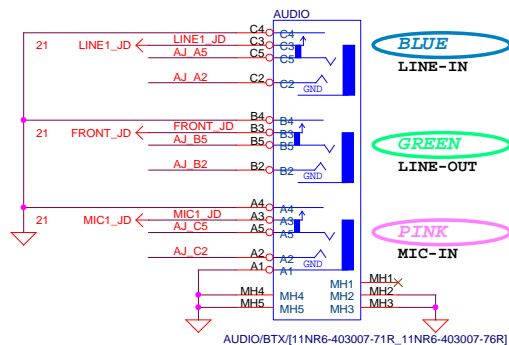
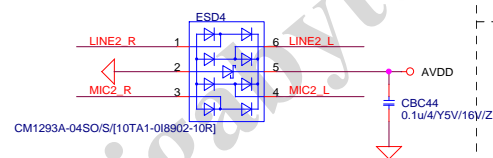


LINE-IN

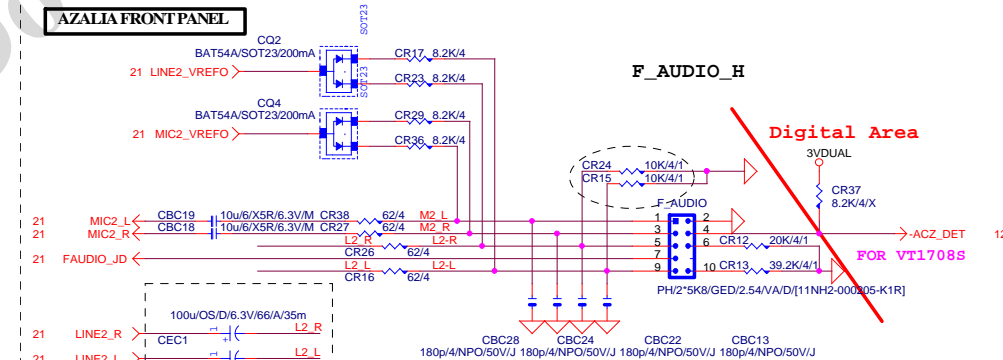
```
Verify MIC function
in LINE-in
```

**MIC-IN**

AZALIA JACK



AZALIA FRONT PANEL

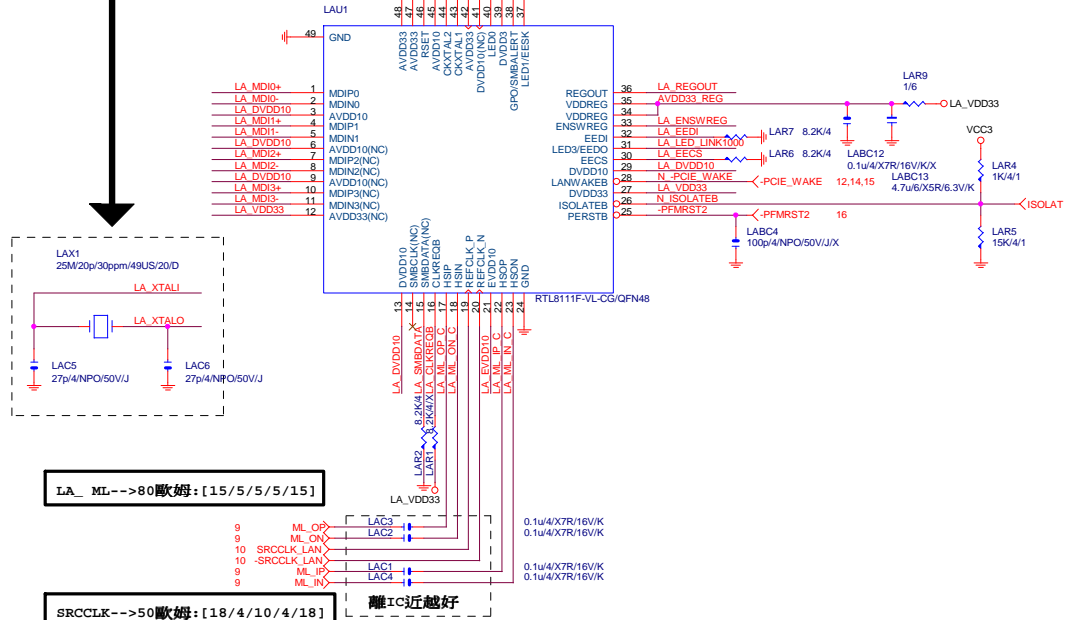


Gigabyte Technology

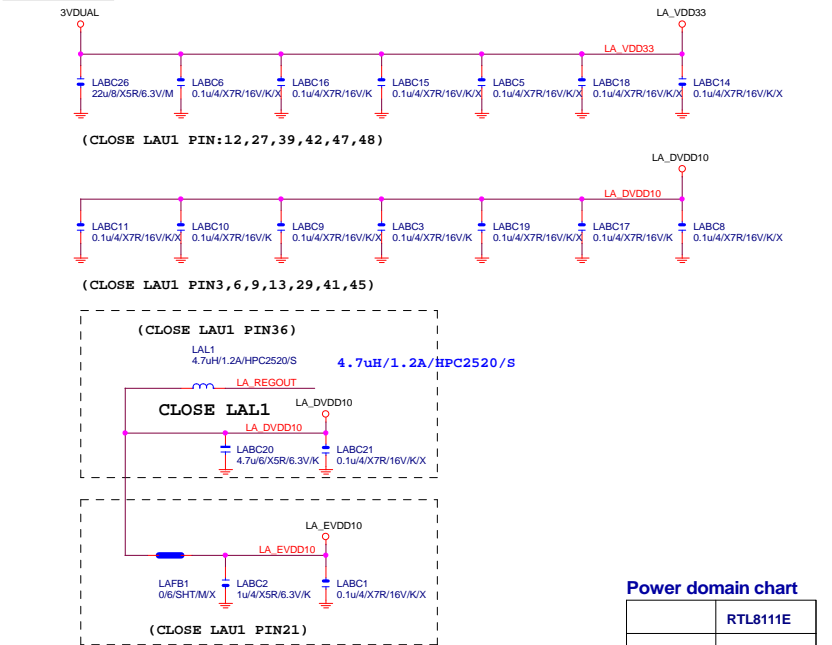
Title			
AUDIO JACK			
Size Custom	Document Number	GA-H61M-DS2 DVI	Rev 1.01
Date:	Tuesday, October 02, 2012	Sheet 22 of 31	

LAN:RTL8111E/VB/VL

SCH BOM OPT:(二擇一使用)
-->(LAR11):M/B有CLK GEN 25M
-->(LAX1,LAC5,LAC6):M/B無CLK GEN 25M



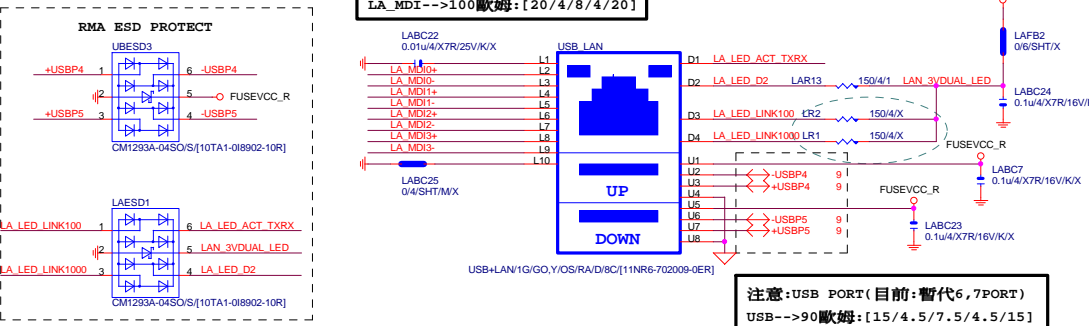
LAN POWER



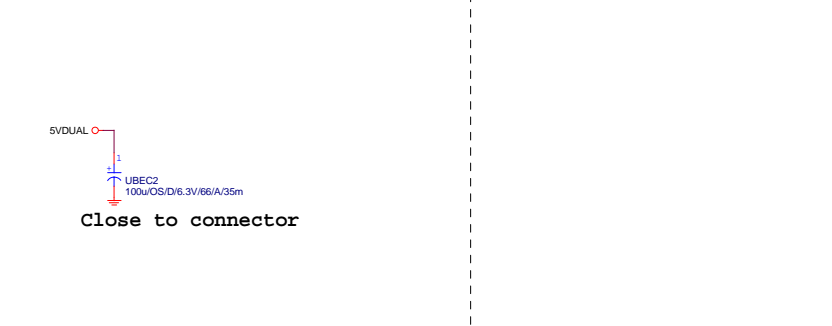
Power domain chart

	RTL8111E
AVDD33	3.3V
DVDD33	3.3V
VDDREG	3.3V
DVDD10	1.05V

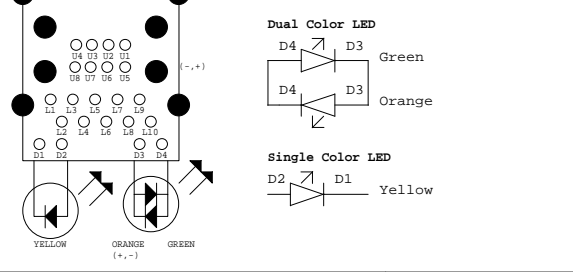
USB LAN CONNECTOR



USB X3 POWER

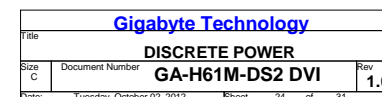


注意:LAN LED PROTECT:(CO-LAYOUT)
1.ESD(6PIN):AOZ8902CIL/SOT23-6(DEFAULT)
2.SURGE(5PIN):AZ2025-04S/SOT23-5L

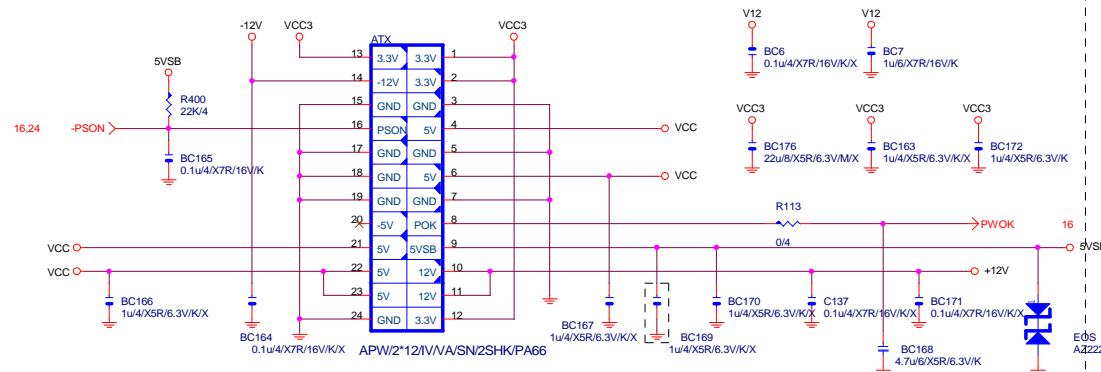


料號	規格	廠商
11NR6-702009-0ER	1G LAN (12core)	UDE
11NR6-702009-91R	1G LAN (8 core)	FOXCONN
11NR6-702009-92R	1G LAN (8 core)	UDE
11NR6-702009-11R	1G LAN (12core/RED)	UDE
11NR6-702009-12R	1G LAN (8 core/RED)	FOXCONN

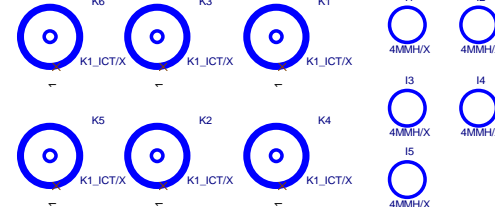
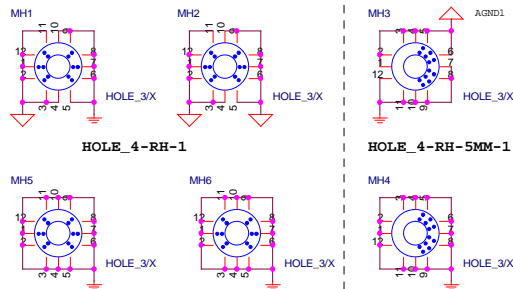
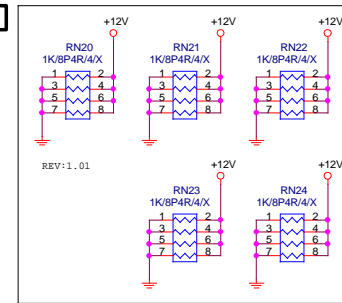
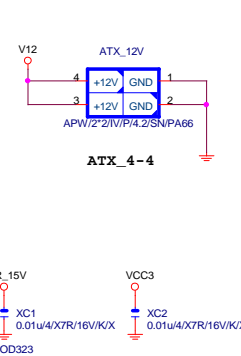
USB LAN BOM區分:
1.(紅色/12CORE/三倍):USB+LAN/1G/GO,Y/OS/RA/D/1/RED
2.(黑色/12CORE):USB+LAN/1G/GO,Y/OS/RA/D/1
3.(黑色/8CORE):USB+LAN/1G/GO,Y/OS/RA/D/8C



ATXX24 POWER CONNECTOR



ATXX4 POWER CONNECTOR

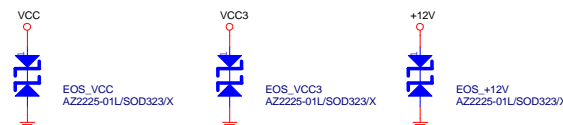


To prevent the 5VSB under loading when boot

5VDUAL1(USB PORT/DDRIII POWER)
5VDUAL(3VDUAL/OTHER)

-S_WARN-->5VDUAL1-->-S_ACK(PCH)-->-DEPSLP/-RSMRST-->5VDUAL-->3VDUAL

HOLE_4-RH-5MM-1



Gigabyte Technology

ATX CONNECTOR

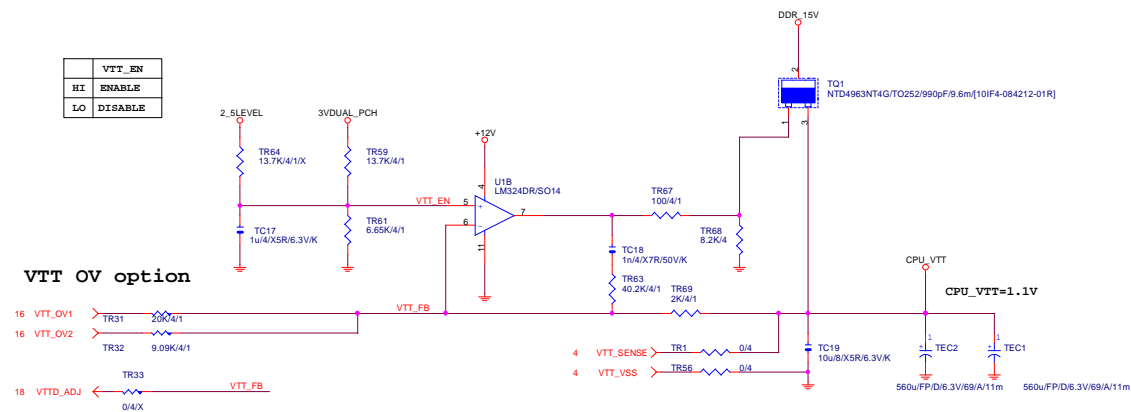
GA-H61M-DS2 DVI

Rev 1.01

Date: Tuesday, October 02, 2012 Sheet 25 of 31

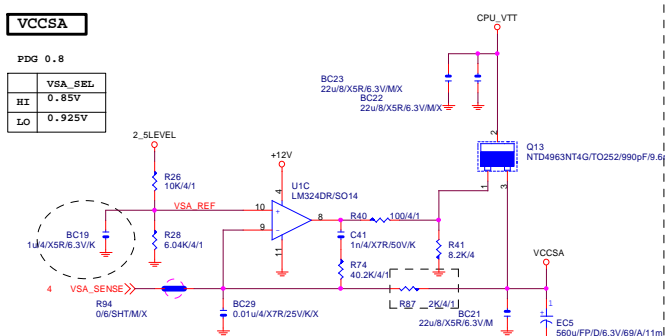
CPU_VTT

	VTT_EN
HI	ENABLE
LO	DISABLE

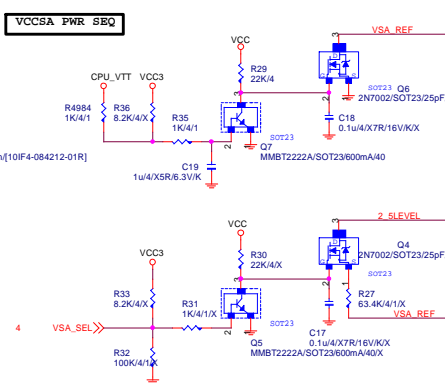


VCCSA

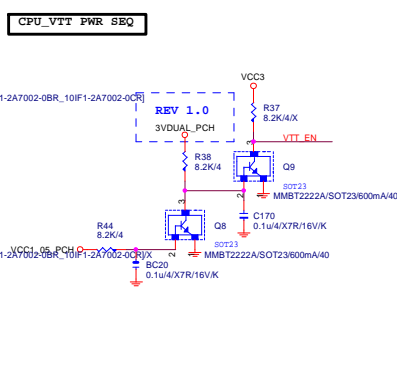
	VSA_SEL
HI	0.85V
LO	0.925V



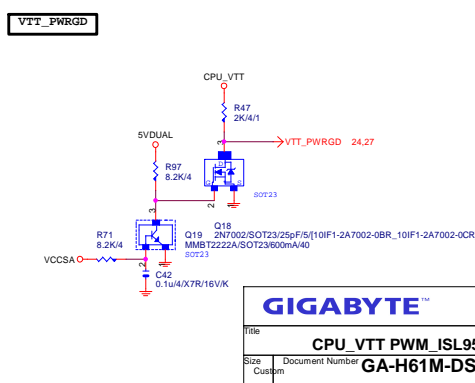
VCCSA	PWR	SEQ
-------	-----	-----

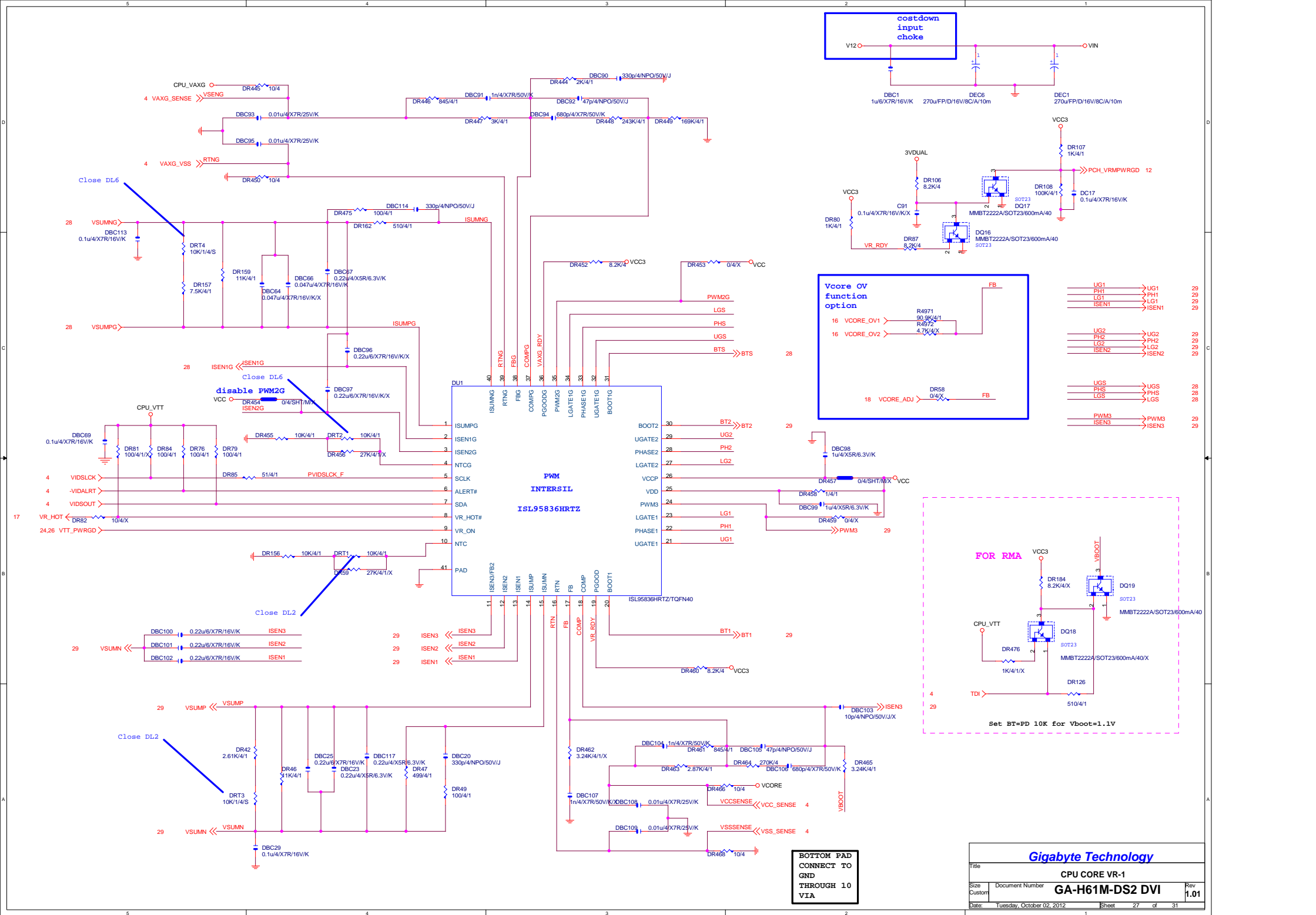


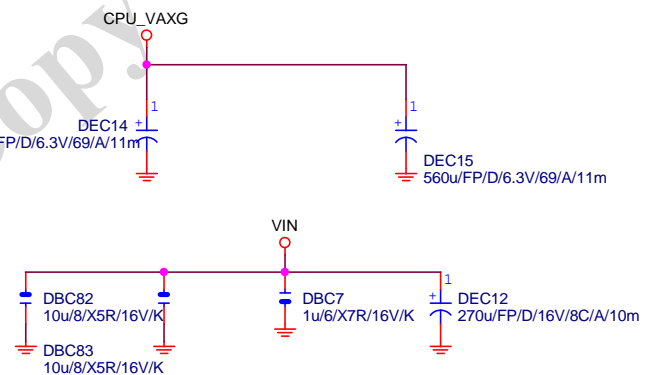
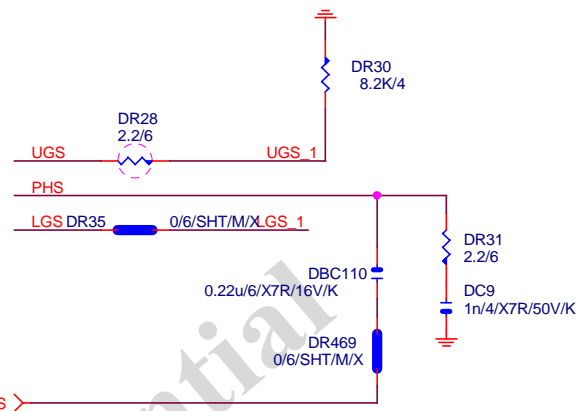
CPU_VTT	PWR	SEQ
0	0	0
0	0	1
0	0	2
0	0	3
0	0	4
0	0	5
0	0	6
0	0	7
0	0	8
0	0	9
0	0	10
0	0	11
0	0	12
0	0	13
0	0	14
0	0	15
0	0	16
0	0	17
0	0	18
0	0	19
0	0	20
0	0	21
0	0	22
0	0	23
0	0	24
0	0	25
0	0	26
0	0	27
0	0	28
0	0	29
0	0	30
0	0	31
0	0	32
0	0	33
0	0	34
0	0	35
0	0	36
0	0	37
0	0	38
0	0	39
0	0	40
0	0	41
0	0	42
0	0	43
0	0	44
0	0	45
0	0	46
0	0	47
0	0	48
0	0	49
0	0	50
0	0	51
0	0	52
0	0	53
0	0	54
0	0	55
0	0	56
0	0	57
0	0	58
0	0	59
0	0	60
0	0	61
0	0	62
0	0	63
0	0	64
0	0	65
0	0	66
0	0	67
0	0	68
0	0	69
0	0	70
0	0	71
0	0	72
0	0	73
0	0	74
0	0	75
0	0	76
0	0	77
0	0	78
0	0	79
0	0	80
0	0	81
0	0	82
0	0	83
0	0	84
0	0	85
0	0	86
0	0	87
0	0	88
0	0	89
0	0	90
0	0	91
0	0	92
0	0	93
0	0	94
0	0	95
0	0	96
0	0	97
0	0	98
0	0	99
0	0	100
0	0	101
0	0	102
0	0	103
0	0	104
0	0	105
0	0	106
0	0	107
0	0	108
0	0	109
0	0	110
0	0	111
0	0	112
0	0	113
0	0	114
0	0	115
0	0	116
0	0	117
0	0	118
0	0	119
0	0	120
0	0	121
0	0	122
0	0	123
0	0	124
0	0	125
0	0	126
0	0	127
0	0	128
0	0	129
0	0	130
0	0	131
0	0	132
0	0	133
0	0	134
0	0	135
0	0	136
0	0	137
0	0	1

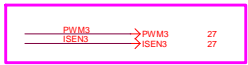


VTT_PWRGD

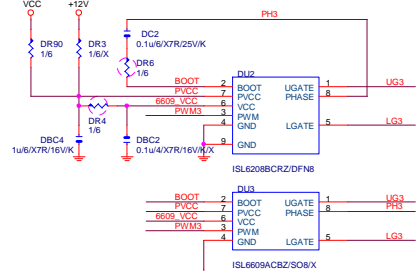




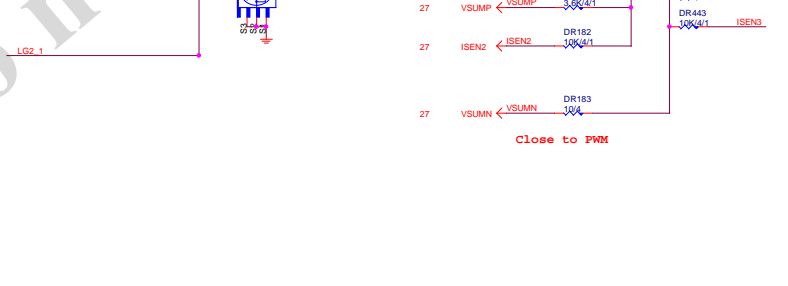
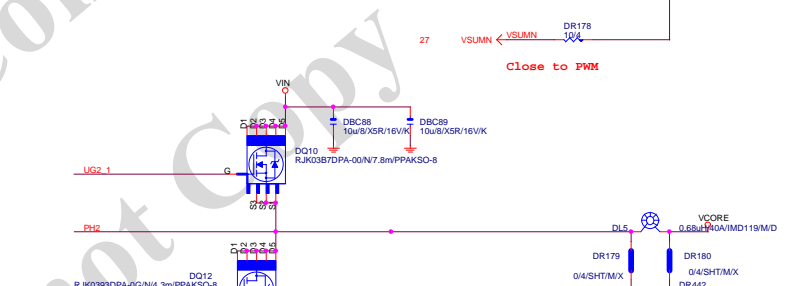
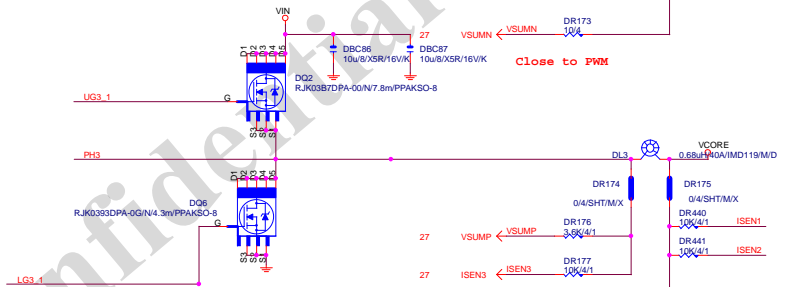
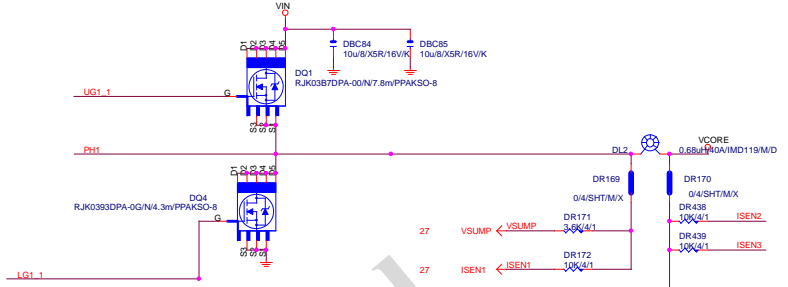
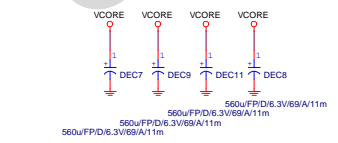
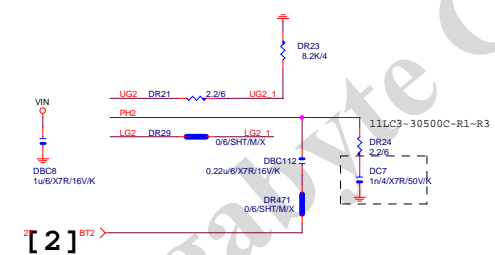
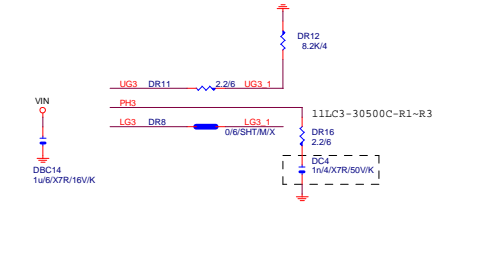
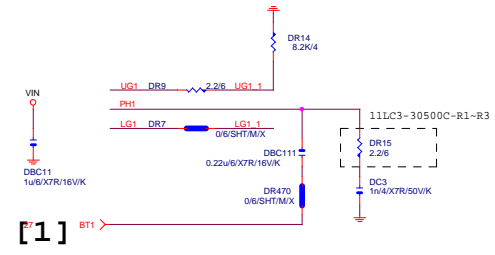
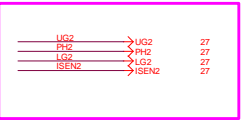




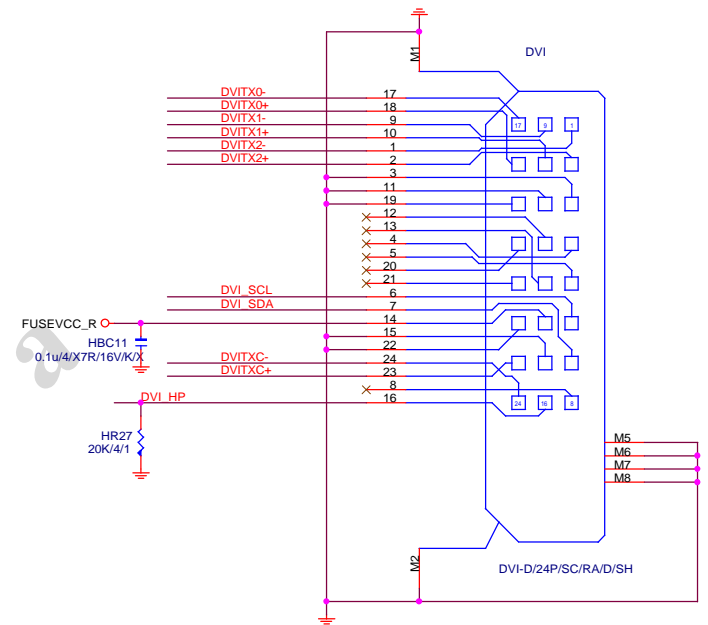
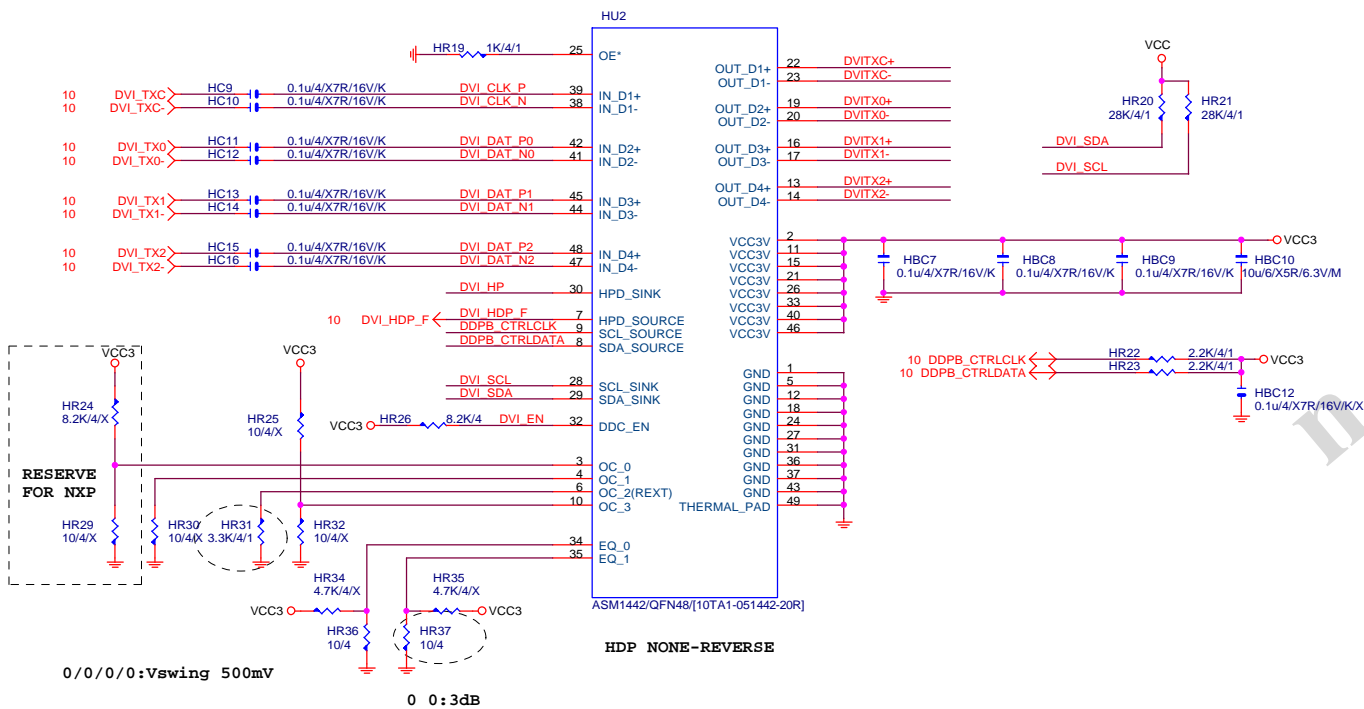
Pop 1SL6625CB for PB2
[1SL6625CBZ/S08]



6609 colay with 6208



DVI LEVEL SHIFT



EMI SHORT PAD

PS:視EMI需求

